



2017 BMC Software  
U.S. Benefits Guide





# Table of Contents

## BMC Benefits that Fit

Benefits Overview .....	2
A Shared Responsibility.....	3
Take Control .....	3

## Enrolling & Making Changes

Accessing Your Benefits .....	4
Eligibility .....	5
Dependent Verification .....	5
Changing Your Elections .....	6
If You Leave BMC .....	7

## Health Benefits

Medical Plans .....	8-19
Health Savings Account .....	20-22
Prescription Drugs .....	23-25
Dental.....	26
Vision .....	27-28
Employee Assistance Program.....	29

## Life & Accident Insurance

Basic Life Insurance.....	30
Supplemental Life Insurance .....	31
Supplemental AD&D Insurance .....	32
Business Travel Accident.....	32
Global Emergency Services.....	33

## Flexible Spending Accounts

Health Care FSA .....	34
Limited Use FSA .....	35
Dependent FSA.....	36
Using Flexible Spending Accounts.....	37-39

## Financial Benefits

BMC 401(k) Plan.....	40-43
----------------------	-------

Paid Time Off & Holidays .....	44-45
--------------------------------	-------





**Disability Benefits**

Short- & Long-Term Disability ..... 47  
 Supplemental Long-Term Disability ..... 48  
 Workers’ Compensation ..... 48  
 Family Medical Leave Act ..... 48

**Work/Life Solutions**

Group Prepaid Legal ..... 49  
 Group Auto/Homeowner’s/Property Insurance ..... 49  
 Pet Insurance ..... 50  
 Tuition Reimbursement Program ..... 51  
 Adoption Assistance ..... 52  
 Fitness Reimbursement Program ..... 52  
 Commuter Account ..... 52

**Plan Contact Information ..... 53**

**Appendices**

Getting Help With Eligibility & Claims..... 54-55  
 COBRA: If You and Your Dependents  
 Lose Health Care Coverage..... 56-57  
 Terms to Know ..... 58-59  
 About This Guide ..... 60

# BMC Benefits That Fit

## Benefits Overview

Wealth accumulation. Healthy living. Financial protection against large medical bills. Financial security for your family. Significant tax advantages.

These are just a few of the valuable features of your employee benefits at BMC Software—a significant part of your total compensation.

We continually look for ways to offer a comprehensive benefits package that represents contemporary thinking in benefit plan design and at the same time provides an important combination of financial protection and security to address both your short-term needs and your long-range goals.

BMC “benefits that fit” lets you build an individual program featuring protection and security that best meets your individual and family needs. Our programs provide support for you and your family in three main categories:

- **Health and Wellness:**  
Promote healthy lifestyles for employees and their families, ensure quality of care and offer excellent preventive benefits—all at a competitive cost. Programs include medical, dental and vision plans, flexible spending accounts, and wellness and health incentives.
- **Financial Well-Being:**  
Enable and encourage employees’ involvement in managing and securing their financial future. Programs include the 401(k) plan, life insurance, and accidental death and dismemberment insurance.
- **Work/Life Solutions:**  
Balance the personal needs of employees while maintaining and improving productivity and client satisfaction. Benefits include group prepaid legal, auto/homeowner’s insurance, and even pet health insurance.



## A Shared Responsibility

Your benefits represent a partnership between you and BMC:

- The company offers a sound, comprehensive benefits program for you and your family and equips you with tools and resources so you can make appropriate decisions for your personal situation.
- You are responsible for understanding the benefits you choose and the rules of each plan—the similarities and differences among your choices—and making the best decisions to provide you and your family with the most appropriate coverage at the most reasonable cost.

## Take Control

You have the chance to build a personalized benefits package each year. “Benefits that fit” offers you:

- **Choice.** Three types of medical plans, various coverage levels for life insurance and other personal protection plans.
- **Tax advantages.** The Health Savings Account allows you to pay for health care expenses with tax-free money and roll over unused money in your account from year to year, helping you grow an untaxed resource for future medical expenses. The Flexible Spending Accounts allow you to pay for health care and dependent care expenses with tax-free money. The BMC 401(k) Plan gives you the ability to grow your wealth while sheltering your savings and investment earnings from current taxes. Or, you may choose—through the Roth option—to pay taxes on the contributions now and shelter future earnings from taxes.
- **Flexibility.** Because your benefit needs change from year to year, you can choose different benefits coverage during annual enrollment, or even during the year if your family situation changes. You can adjust your Health Savings Account contributions and your 401(k) savings rate any time during the year.
- **Easy, real-time access.** For health care and other benefits, log on any time to the [My BMC Compensation & Benefits](#) website (select **Your Benefits Resources**) to find detailed information about benefit choices and coverages. For the 401(k) log on to Fidelity Netbenefits® ([www.netbenefits.com](http://www.netbenefits.com)) to enroll, keep track of your account balances, and make savings and investment changes.





# Enrolling & Making Changes

## Accessing Your Benefits

Detailed, personalized information about your BMC benefits is available from two websites:

- My BMC Compensation & Benefits ([www.mybmcrewards.com](http://www.mybmcrewards.com)) provides a snapshot of your pay, retirement benefits, health and insurance benefits, and corporate programs that help enhance your life at work and at home. Select **Your Benefits Resources** for a more detailed look at your health and insurance benefits and costs, or to change your benefits elections. Select **Your Spending Account™** (YSA) to:
  - Manage your Flexible Spending Accounts, Health Savings Account or Commuter Account
  - Submit benefit approvals or claims for the Tuition and Fitness Reimbursement programs, and Adoption Assistance.

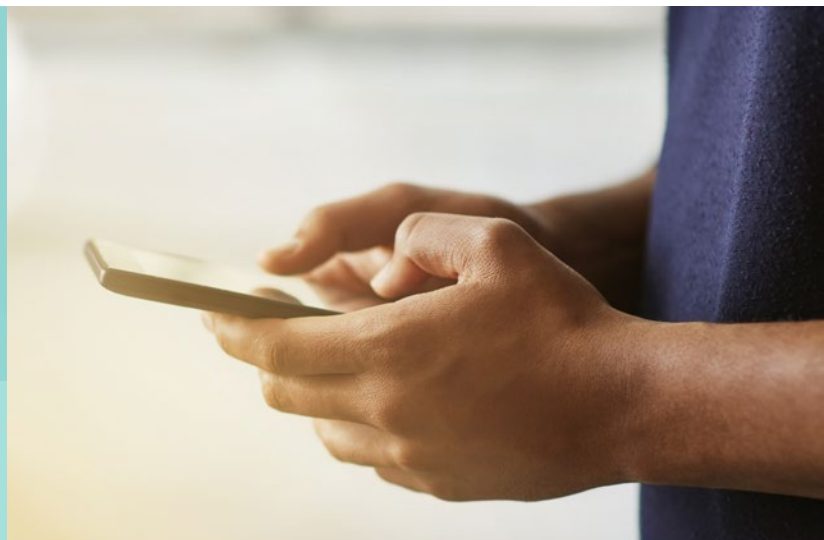
You can also get answers about your benefits or make permitted benefits changes by calling 1-877-262-4849 and speaking with a Your Benefits Resources representative. Representatives can also connect you to special advocates for help with conflict resolution with your medical, dental, vision, or health care FSA administrators. [See page 55](#) for details.

- Fidelity Netbenefits® ([www.netbenefits.com](http://www.netbenefits.com))—makes managing your 401(k) savings as simple as possible. It gives you easy access to view and manage your portfolio and to take action on your accounts, and the online tools can help you determine your retirement readiness.

### Need Help?

#### Call 1-877-BMC-4849

- Enter your identification and password
- Select **Your Benefits Resources**. You will be routed directly to someone that can help you. Representatives are available 8 a.m. to 9 p.m. Eastern time, Monday through Friday.



## Eligibility

You are eligible to participate in all BMC benefits if you're an active, full-time, regular employee scheduled to work at least 30 hours a week. All of your benefits begin on your first day of employment. You receive full medical benefits with no waiting periods and no pre-existing health condition exclusions.

Your dependents may also be enrolled in BMC benefits if they meet eligibility requirements.

Eligible dependents include your:

- Lawful spouse (including common-law, same-sex spouse or civil union partnership under state law)
- Same- or opposite-gender domestic partner with whom you have filed a registered domestic partnership registration in your state or with whom you are in a long-term relationship (at least twelve months)
- Children under the age of 26 regardless of whether they are married (medical, dental, vision, and supplemental life insurance) or a full-time student, including natural or legally adopted children, foster children, step-children, or children in your court-ordered custody or for whom you are the legal guardian
- Unmarried disabled children of any age who depend on you for support

## Dependent Verification

Verification is required any time you add a dependent to coverage in a medical plan. If you enroll a dependent for coverage, you will be required to verify your dependents' eligibility by providing a copy of a valid marriage certificate, domestic partner registration or birth certificate.

After you enroll, you will receive instructions in your mail for providing these documents. Documents must be completed and returned to continue coverage. If you do not complete and return the requested documents, your dependents will be ineligible for coverage and dropped from BMC benefits.

## Newly Hired Employees

If you don't enroll yourself or your eligible dependents within 31 days of your hire date, you're automatically covered by these BMC benefits:

- Employee-only BCBSTX HSA Medical
- Basic Life Insurance
- Short-Term Disability
- Basic Long-Term Disability
- Business Travel Accident
- Employee Assistance Program

## Changing Your Elections

Generally, any benefit choices that you make upon joining BMC as a new employee remain in effect for the entire calendar year. In some situations, you can make limited changes to your coverage during the year. Those situations are called qualified family status changes (life events).

You have 31 days from the date of the qualified family status change (life event) to make new benefit elections for the remainder of the year. Changes are allowed only for the benefit coverages that are consistent with the change. (For example, the birth of a child allows you to add your new dependent to your health plan and to add dependent life insurance.)

### Making Benefit Changes

#### Online

- 1) Log on to the **My BMC Compensation & Benefits** website (available anytime from any computer with Internet access).
- 2) Select **Your Benefits Resources**.
- 3) Select the life event from the drop-down menu.
- 4) Follow the instructions.

#### Telephone Access

Call Your Benefits Resources at 1-877-BMC-4849. Representatives are available between 8 a.m. and 9 p.m. (Eastern time), Monday through Friday.

The following events may qualify as family status changes (life events):

- Marriage or divorce
- Formation or dissolution of a domestic partnership
- Birth, adoption or placement for adoption of a child
- Death of your spouse, domestic partner or dependent
- Change in your spouse's/domestic partner's employment
- Loss of other health care coverage (if you elected "No coverage" because other coverage was available)
- Your child loses eligibility as a dependent (When your covered child turns age 26 he or she will be eligible for COBRA. [See page 56](#))
- Loss of COBRA coverage
- A Qualified Medical Child Support Order (QMCSO) or other court order is issued
- You or your spouse/domestic partner goes on or returns from an unpaid leave of absence
- Significant change in coverage or cost of coverage provided to your spouse/domestic partner by his or her employer
- You, your spouse/domestic partner or dependent becomes eligible for Medicare or Medicaid



## If You Leave BMC

If you leave BMC, you may be eligible to continue your health care coverage under the Consolidated Omnibus Budget Reconciliation Act (COBRA). Information about continuation of coverage and the conditions and requirements for obtaining this coverage will be sent to your home address. In addition, you can call Your Benefits Resources at 1-877-BMC-4849 to speak with a Benefits Representative. [See page 56](#) or go online to Your Benefits Resources website.

Life insurance, short-term and long-term disability and prepaid legal benefit coverage ends on your last day worked at BMC, but health insurance coverage ends on the last day of the month in which any of the following occur:

- Your employment status changes from full-time to part-time
- You terminate employment
- Your dependents are no longer eligible
- The benefit plan is discontinued

### Keep Your Plan Informed of Address Changes

Be sure to keep your current address and your dependents' addresses on file with Your Benefits Resources Benefits Center.

It is critical that you maintain your current address and other contact information on Employee Direct Access (EDA) so that you receive benefits communications in a timely manner. You can access EDA through the Oracle logon link on the BMC intranet home page (<https://my.bmc.com>).

# Health Benefits

## Medical Plans

BMC offers three medical plan choices:

- **Blue Cross Blue Shield of Texas (BCBSTX) HSA (Health Savings Account)**  
A high-deductible medical plan with a tax-free Health Savings Account. This medical plan offers you a choice of medical care providers similar to a traditional PPO plan and provides in- and out-of-network benefits. In addition, BMC makes an annual contribution to your HSA for you to use during the year to pay your share of health-related expenses. Unused money in your HSA rolls over from year to year for you to use for future health expenses. Prescription drug coverage is provided through Express Scripts.
- **Blue Cross Blue Shield of Texas (BCBSTX) PPO (Preferred Provider Organization)**  
A medical plan that lets you decide where to receive care each time you need it. If you use a provider in the PPO network, you pay less for health services. If you receive care from a non-network provider, you pay a larger portion of the cost, and the cost itself is higher. Prescription drug coverage is provided through Express Scripts.
- **Kaiser HMO (Health Maintenance Organization)**  
Available only in California. A managed care medical plan that provides medical and prescription drug benefits only when you receive care within the HMO network and when the care is coordinated by your primary care physician.

## Traveling Abroad

Your medical benefits travel with you when you venture outside the U.S. Before you leave home, contact your medical plan to learn what you would have to pay out of your own pocket if you need medical care while away. Remember, always carry your medical ID card with you, and in an emergency, go directly to the nearest hospital.

## Blue Cross Blue Shield Global Core

If you participate in the Health Savings Account (HSA) or Preferred Provider Organization (PPO) medical plans, you have access to BCBS network providers in more than 200 countries and territories around the world through Blue Cross Blue Shield Global Core.

When you need assistance outside the U.S., call the Blue Cross Blue Shield Global Core Service Center. Service is available any time by calling toll free at 800-810-2583 or collect at 804-673-1177. To find a provider, download the free [Blue Cross Blue Shield Global Core mobile app](#).

Visit [www.mybmcbita.com](http://www.mybmcbita.com) for more information about benefits that cover you when you travel.

## Here is a Snapshot of the Medical Plan Choices

	BCBSTX HSA		BCBSTX PPO		KAISER HMO
<b>You Receive Care From:</b>	Any provider you choose; in-network services cost you less		Any provider you choose; in-network services cost you less		Providers in the network
<b>Claim Forms and Paperwork Are Filed By:</b>	In-Network: Your doctor	Out-of-Network: You	In-Network: Your doctor	Out-of-Network: You	In-Network: Your provider
<b>Managing Your Health</b>	You coordinate your care		You coordinate your care		Primary care physician coordinates care with you
<b>Out-of-Area Participant Coverage</b>	Yes		Yes		Emergencies only—check with plan
<b>Your Cost Share</b>	Your monthly premium is lower, but you pay for all medical services (except preventive) and prescription drug costs (except 15% of certain preventive prescription drugs) until you reach the deductible. After you reach the deductible, the cost is shared between BMC and you.		Your monthly premium is higher; you only pay a copay for doctor's visits and prescription drugs. Certain services are subject to a deductible, and then the cost is shared between BMC and you.		Your monthly premium is higher; you only pay a copay for most services.
<b>Health Savings Account (HSA)</b>	A Health Savings Account is automatically opened for you. You receive employer contributions, and you may make your own before-tax payroll contributions up to the annual IRS limit. See page 20 for more information.		Not eligible to participate		Not eligible to participate
<b>Health Care Flexible Spending Account (FSA)</b>	You may make before-tax contributions to a Limited Use FSA for dental and vision care. After you have reached your deductible, you may also receive reimbursement for medical claims incurred after that date. See page 35 for more information.		You may make before-tax contributions to a Health Care Flexible Spending Account for all eligible health expenses allowed by the <a href="#">IRS Publication 502</a> . See page 34 for more information.		You may make before-tax contributions to a Health Care Flexible Spending Account for all eligible health expenses allowed by the <a href="#">IRS Publication 502</a> . See page 34 for more information.

See details about benefits under each plan on [pages 14 through 19](#).



### Cost-Saving Health Care Tools and Resources

BMC gives you the tools and resources you need to take care of yourself and make good medical decisions. These programs are designed to help you manage your health, save time, and save money.

#### Best Doctors

Best Doctors® is automatically provided at no cost to you and your covered dependents. This confidential service is designed to help you easily and confidentially get second opinions from medical experts all around the nation. By contacting Best Doctors, you can have all of your medical questions and concerns addressed by carefully selected expert physicians.

#### Four ways to be sure about your health

Here are four ways you can feel more confident about your health care decisions with the help of Best Doctors:

1. **Get an in-depth medical review, like a second opinion.** Best Doctors learn about your condition and then contact your current specialist or physician to collect your medical records, images and test samples. An expert specialist will review your records and send you a comprehensive, easy-to-understand report recommending a course of action.
2. **Ask the Expert.** If you have questions about a medical condition or treatment plan, Ask the Expert provides you with answers. You will receive written guidance from a Best Doctors expert who specializes in your unique condition.
3. **Find a Best Doctor.** The Best Doctors database includes over 53,000 of the world's top medical experts. If you need to visit a specialist, we will search to see if any of our doctors meet your criteria and practice within a distance that works for you.
4. **Critical Care Support.** When you're in the ER or ICU after a serious accident or medical event, the decisions about your care can be the matter of life or death. Best Doctors emergency medical experts can provide early intervention. Your doctor and the Best Doctors expert will collaborate to ensure you have the right care at the right time, reducing your hospital stay and speeding your recovery.

You can learn more or get started using Best Doctors online at [members.bestdoctors.com](http://members.bestdoctors.com) or by calling 1-866-904-0910.

#### Healthcare Bluebook

Most of us have no idea if the prices doctors, dentists, and other health care providers offer are fair or not. When prices for the same in-network procedure can vary by over 500%, chances are you're paying more than you have to. Healthcare Bluebook is an online tool to research the cost and quality of health care services – so you can search for the care you need at the right price.

The power behind Healthcare Bluebook is an easy to use searchable database giving you the Fair Price – the amount a patient should reasonably expect to pay. The Fair Price is determined based on the range of prices from the providers and facilities in your area.

Using Healthcare Bluebook saves you hundreds of dollars and rewards you when you shop smart for health care. The Go Green to Get Green rewards program sends you a check for \$25, \$50, or \$100 if you choose a “green” provider for certain medical procedures, like MRIs. A “green” provider charges the fair price or less. You, and your covered spouse/partner and dependents, are eligible to be rewarded. When you search for an eligible procedure on the Healthcare Bluebook app (or at [healthcarebluebook.com/cc/bmc](http://healthcarebluebook.com/cc/bmc)), a tile will display on the results page, letting you know the service is eligible for a reward. The next time you need a procedure, check Healthcare Bluebook first and you could earn some green! Before seeking care, always confirm that providers are in-network.

**Telehealth through MDLIVE®**

MDLIVE gives you round-the-clock access to board-certified doctors and licensed therapists by online video, phone or secure e-mail. MDLIVE is available to assist you with non-emergency physical and behavioral health issues.

The cost for telehealth consultations are:

- HSA Plan participants: \$40 for doctor consultations. Behavioral health consultations range from \$80 to \$175 until the plan deductible is met. After the deductible is met, you'll pay 15% of the consultation cost.
- PPO Plan participants: \$40 for all consultations.

**BMC Wellness Program: Your Way to Better Health and Savings**

When you take action to get healthy and stay healthy, you feel better, you're happier and you enjoy a better quality of life. Taking good care of ourselves and seeking preventive care improves our overall well-being. It also leads to better health outcomes.

The BMC wellness program — bWell – your well-being matters — gives you the opportunity to assess your current health status and provides you with tools and a support system to improve or maintain your health. Participating in bWell also helps you save on health care costs.

Each year you have an opportunity to earn medical plan premium credits that reduce your next year's monthly paycheck costs for health care. Details on how to earn credits are announced each year. You can see program details by visiting [mybmcwellness.com](http://mybmcwellness.com) or by calling ADURO, our wellness program partner, at 1-855-864-0721. bWell also offers fun individual, team and community challenges, and incentives for participating. Easy-to-use online tools and achievement milestones inspire participants to keep reaching for the next level of health.

**2017 PROGRAM OVERVIEW****How to earn points:**

Earn points by participating in a team or individual challenge, tracking your activity or food, or by completing many other wellness activities. To earn more about earning points visit [myBMCwellness.com](http://myBMCwellness.com).



Level 2 and 3 rewards limited to participants covered on a BMC medical plan.

The bWell program offers the following programs and resources to employees eligible for BMC benefits:

**Biometric screening:** A biometric screening provides an excellent opportunity to know your numbers — several key measurements like blood glucose and total cholesterol — that can greatly affect your health. An on-site health professional draws a small amount of blood and measures your height, weight and waistline. Then, you get a personalized report highlighting your results and what they mean. If you work from home or cannot attend an onsite screening, have your doctor perform the screening and submit a [physician fax form](#). You can also print a [LabCorp form](#) and take it and your photo identification to your local LabCorp facility. Find details about these screenings at [mybmcwellness.com](#).

**Well-Being Assessment (WBA):** The WBA is an online, confidential health questionnaire that assesses your lifestyle and overall health. Simply answer a few focused questions and get instant feedback on what's helping or hurting your overall health and well-being.

**Ignite Your Life Coaching:** Ignite Your Life Coaching is a perfect way to break old patterns, improve your health, or create a new you. Each Ignite Your Life program consists of four to six sessions designed to educate you to be your best self.

Programs include:

- Address the Stress – Learn how to survive and thrive in times of stress
- Mission Nutrition – Make positive changes for a nourishing lifestyle
- Weight Loss – Take control and become your healthiest self
- Nip it in the Butt – Become tobacco free by reshaping your habits.

Call 1-888-213-7953 to develop a personal plan and overcome challenges and achieve your goals with a personal coach.

Your participation in any BMC wellness activity is completely voluntary and confidential. The personal information provided as part of the health screening and Well-Being Assessment are confidential, and are NOT available to BMC. ADURO treats the screening and assessment as confidential personal medical documents. BMC will only receive a summary report recommending what health promotion programs would be most beneficial for the entire employee population.

To get started or learn how to earn premium credits, go to [mybmcwellness.com](#) and click **Sign Up**, or call ADURO at 1-855-864-0721.

### Finding a Network Provider

It's easy to locate network providers for the BCBSTX HSA, the BCBSTX PPO and the Kaiser HMO. You can find a list of participating providers on the BCBSTX website ([www.bcbstx.com](#)) and on the Kaiser website ([www.kp.org](#)), or you can contact BCBSTX and Kaiser directly by phone to request a provider directory. You can also access the applicable provider directory through the [My BMC Compensation & Benefits](#) website. Select **Your Benefits Resources**, then hover over **Health and Insurance** and select **TAKE ACTION — Find A Doctor**.

If you are enrolled in one of the BCBSTX coverage options and you choose not to use a network provider for your medical services, your out-of-pocket costs will be higher (for a comparison of in- and out-of-network coverage, see the charts beginning on page 14). You may also have to file a claim form to receive reimbursement for services within 12 months of the date of the service. Prescription drug claims through Express Scripts must be processed by a Express Scripts in-network pharmacy or through the Express Scripts mail-order program. If you choose not to use a Express Scripts network pharmacy, your benefit will be reduced to 50% of the drug cost and you will need to submit a claim form for reimbursement.

If you are enrolled in the Kaiser HMO coverage option, no benefits are payable for services or prescription drugs provided by facilities, providers or pharmacies outside of the Kaiser network except in certain emergency situations. This includes coverage for dependents living outside the coverage area and certain emergency situations for all covered members. Please check with Kaiser directly about this coverage.



## Deductible and Out-of-Pocket Maximum

Under the BCBSTX medical plans, you have a deductible to meet each plan year (the Kaiser HMO has no annual deductible). The deductible is fully paid by you. Once the plan deductible is met, the plan begins paying at the appropriate level. The BCBSTX PPO Plan and the BCBSTX HSA Plan have separate deductibles for in-network and out-of-network coverage. [See the charts on pages 14-19](#) for the deductible and coinsurance levels for each plan.

IRS guidelines specify that if you enroll in a qualified High Deductible Health Plan (HDHP) like the BCBSTX HSA and elect coverage for one or more family members, individual deductibles do not apply. **You must meet the entire family deductible before the plan begins paying for any covered individual (except preventive care and certain preventive prescription drugs).**

If you reach the annual deductible, BMC pays 85% of eligible in-network expenses, and you pay the rest through coinsurance. Once you reach the out-of-pocket maximum, BMC pays 100% of most eligible in-network expenses for the rest of the year. If you are enrolled in the BCBSTX HSA Plan and have family coverage (employee plus spouse, employee plus child(ren) or employee plus family) the single out-of-pocket maximum does not apply. You will need to satisfy the \$6,000 (in-network) or \$12,000 (out-of-network) out-of-pocket maximum before BMC pays 100% of the cost.

## Medicare and Your BMC Medical Benefits

If you are an active employee or covered dependent and you become eligible for Medicare, you can choose to:

- Continue primary coverage under the BMC plans. You can also enroll in Medicare, but Medicare will be the secondary payer. You can enroll in both Medicare Part A and Part B, or enroll in Part A only and delay enrollment in Part B.
- Drop coverage under the BMC plans and have Medicare as your primary source of coverage.

If you delay enrollment in Medicare beyond age 65 because you are covered by the BMC plans, you will be able to enroll in Medicare later (after you are no longer covered by BMC) without the usual late enrollment penalty. Typically, you will have a “special enrollment period” of eight months from the time you no longer have employer-based coverage to enroll in Medicare. If you wait longer than eight months to enroll, you will lose your special enrollment rights and will have to wait until the once-a-year annual enrollment period, and you will pay higher Medicare premiums.

Additional rules apply concerning COBRA coverage and Medicare. For more information, please [see page 56](#).

If you are already Medicare-eligible or expect to be shortly, please contact the Social Security Administration at the Web address or phone number listed in the Plan Contact Information section of this guide.

## How Medicare Affects Your Health Savings Account

If you are age 65 or older, you can contribute to a Health Savings Account (HSA) and receive BMC HSA contributions until the month you enroll in Medicare. You are responsible for confirming that you have not enrolled in any Medicare plan by contacting the Social Security Administration at 1-800-772-1213. Contributing to an HSA while enrolled in Medicare will result in tax liabilities. For more information, see page 3 of the IRS publication, [Health Savings Accounts and Other Tax Favored Health Plans](#).

If you are planning to enroll in Medicare, call the Benefits Center at 1-877-262-4849 to have your HSA contributions stopped on the first of the month that your Medicare coverage becomes effective. Remember that when you sign up for Social Security retirement benefits and are at least six months beyond your full retirement age (currently 66), Social Security will give you six months of retirement “back pay” and backdate your Medicare Part A enrollment six months. Under IRS rules you are liable to pay tax penalties on any contributions to your HSA account during the six months you had Medicare Part A. To avoid the penalties, you need to stop all contributions to your HSA account up to six months before you sign up for your Social Security retirement benefits.

You can continue coverage under the HSA Plan (medical insurance only) and use your remaining HSA funds to pay for qualified medical expenses, including Medicare premiums.

## BCBSTX HSA Plan

PLAN FEATURE	IN-NETWORK	OUT-OF-NETWORK
Annual Deductible	\$1,500 single/\$3,000 all other coverage levels	\$3,000 single/\$6,000 all other coverage levels
Annual Out-of-Pocket Maximum (includes deductible and copays)	\$3,000 single/ \$6,000 all other coverage levels	\$6,000 single/ \$12,000 all other coverage levels (excludes amounts above usual and customary)
Lifetime Maximum Benefit	Unlimited	Unlimited
<b>General Medical Expenses</b>		
Primary & Specialist Doctor Office Visit (includes maternity care)	85% covered after deductible	65% covered after deductible
MDLIVE Physician <sup>1</sup>	\$40	not applicable
<b>Inpatient Hospital Care (requires preauthorization)</b>		
Hospitalization <sup>2</sup>	85% covered after deductible	65% covered after deductible
Inpatient Physician and Surgeon Services <sup>2</sup>	85% covered after deductible	65% covered after deductible
Inpatient Lab and X-ray <sup>3</sup>	85% covered after deductible	65% covered after deductible
Maternity and Delivery Services & New-born Nursery Services <sup>4</sup>	85% covered after deductible	65% covered after deductible
<b>Outpatient Care</b>		
Outpatient Surgery	85% covered after deductible	65% covered after deductible
Outpatient Laboratory Services & X-ray Services <sup>3</sup>	85% covered after deductible	65% covered after deductible
<b>Preventive Care</b>		
Annual Physical Exam & Immunizations	100% covered per exam (no deductible applies)	65% covered after deductible
Well-Baby & Well-Child Exams and Immunizations	100% covered per exam (no deductible applies)	65% covered after deductible
Well-Woman Exam	100% covered per exam (no deductible applies)	65% covered after deductible
Other Preventive Care & Cancer Screenings <sup>5</sup>	100% covered per exam (no deductible applies)	65% covered after deductible

- (1) Your payments to MDLIVE count toward the in-network deductible and out-of-pocket maximums for the HSA and PPO medical plans.
- (2) The plan covers bariatric surgery, knee and hip replacements, select spine surgeries and some transplants if performed at a Blue Distinction Center.
- (3) Certain high-tech radiology tests (CT scans and MRIs) require prior authorization except during a medical emergency. Authorization is not required for low resolution diagnostic services, including mammograms, sonograms, and x-rays.
- (4) Your newborn is automatically covered under the plan for the first 31 days after the date of birth. If you wish to continue coverage for the newborn beyond that date, you must add the child to your medical coverage through the [My BMC Compensation & Benefits](#) website (select **Your Benefits Resources**) within 31 days after the newborn's date of birth.
- (5) Other preventive exams and cancer screenings may have age and time limit restrictions. Review your medical plan details on the [My BMC Compensation & Benefits](#) website. Select **Your Benefits Resources**, then hover over **Knowledge Center** and select **Plan Information**.

(BCBSTX HSA Plan continues on page 15)

## BCBSTX HSA Plan (continued)

PLAN FEATURE	IN-NETWORK	OUT-OF-NETWORK
<b>Emergency Services</b>		
Hospital Emergency Facility	85% covered after deductible	85% covered after deductible
Non-Emergency Care in a Hospital Emergency Room	Not covered	Not covered
Urgent Medical Care (at a non-hospital free standing facility)	85% covered after deductible	65% covered after deductible
<b>Chiropractic Services</b>		
Spinal Manipulation	85% covered after deductible Maximum of 25 visits each calendar year (in-and out-of-network services combined)	65% covered after deductible Maximum of 25 visits each calendar year (in-and out-of-network services combined)
<b>Short-Term Rehabilitation Therapy <sup>6</sup></b>		
Outpatient Physical, Speech, Occupational Therapy	85% covered after deductible; 60-visit combined maximum per year	65% covered after deductible; 60-visit combined maximum per year
<b>Mental Health, Substance Abuse Care</b>		
Mental Health: Inpatient & Outpatient Coverage	85% covered after deductible	65% covered after deductible
Rehab and Detox: Inpatient & Outpatient Coverage	85% covered after deductible	65% covered after deductible
Residential Treatment Facility (stays in a residential treatment facility for treatment of mental disorders, alcoholism or drug abuse)	85% covered after deductible	65% covered after deductible
MDLIVE <sup>®</sup> Behavioral Therapy	\$80 to \$175 per consultation before deductible depending on provider selected; 85% covered after deductible	Not applicable
<b>Other Benefits</b>		
Condition Management	BCBSTX Condition Management programs offer support for people diagnosed with chronic conditions such as asthma, diabetes, heart problems and others.	
Prescription Drugs	Prescription Drugs are covered through Express Scripts and not through BCBSTX. Please <a href="#">see page 23</a> for more information.	
Health Savings Account	You will have a Health Savings Account opened for you through UMB Bank. BMC deposits employer contributions, and you may choose to deposit your own contributions into this account. Please <a href="#">see pages 20 through 22</a> for more information.	

(6) Additional plan authorization review required after 30 days.

**Important:** Other limitations may apply. Please review your plan documents for details.



## BCBSTX PPO Plan

PLAN FEATURE	IN-NETWORK	OUT-OF-NETWORK
Annual Deductible	\$750 single/\$1,500 all other coverage levels	\$2,250 single/\$4,500 all other coverage levels
Annual Out-of-Pocket Maximum (includes deductible and office visit copays only)	\$3,000 single/ \$6,000 all other coverage levels	\$9,000 single/ \$18,000 all other coverage levels (excludes amounts above usual and customary)
Lifetime Maximum Benefit	Unlimited	Unlimited
<b>General Medical Expenses</b>		
Primary Doctor Office Visit	\$25 copay	65% covered after deductible
MDLIVE Physician <sup>1</sup>	\$40	not applicable
Specialist Office Visit	\$40 copay	65% covered after deductible
<b>Inpatient Hospital Care (requires preauthorization)</b>		
Hospitalization <sup>2</sup>	85% covered after deductible	65% covered after deductible
Inpatient Physician and Surgeon Services <sup>2</sup>	85% covered after deductible	65% covered after deductible
Inpatient Lab and X-ray <sup>3</sup>	85% covered after deductible	65% covered after deductible
<b>Outpatient Care</b>		
Outpatient Surgery	85% covered after deductible; if performed as a part of an office visit and billed by a physician applicable copay applies	65% covered after deductible
Outpatient Laboratory Services & X-ray <sup>3</sup>	85% covered after deductible; if performed as part of an office visit and billed by a physician applicable copay applies	65% covered after deductible
<b>Chiropractic Services</b>		
Spinal Manipulation	\$40 copay Maximum of 25 visits each calendar year (in-and out-of-network services combined)	65% covered after deductible Maximum of 25 visits each calendar year (in-and out-of-network services combined)
<b>Preventive Care</b>		
Annual Physical Exam & Immunizations	100% covered	65% covered after deductible
Well-Baby & Well-Child Exams & Immunizations	100% covered	65% covered after deductible
Well-Woman Exam	100% covered	65% covered after deductible
Other Preventive Care & Cancer Screenings <sup>4</sup>	100% covered	65% covered after deductible

- (1) Your payments to MDLIVE count toward the in-network deductibles and out-of-pocket maximums for the HSA and PPO medical plans.
- (2) The plan covers bariatric surgery, knee and hip replacements, select spine surgeries and some transplants if performed at a Blue Distinction Center.
- (3) Certain high-tech radiology tests (CT scans and MRIs) require prior authorization except during a medical emergency. Authorization is not required for low resolution diagnostic services, including mammograms, sonograms, and x-rays.
- (4) Other preventive exams and cancer screenings may have age and time limit restrictions. Review your medical plan details on the [My BMC Compensation & Benefits](#) website. Select **Your Benefits Resources**, then hover over **Knowledge Center** and select **Plan Information**.

(BCBSTX PPO Plan continues on page 17)

## BCBSTX PPO Plan (continued)

PLAN FEATURE	IN-NETWORK	OUT-OF-NETWORK
<b>Maternity Care<sup>5</sup></b>		
Office Visit: Prenatal/Postnatal	\$25 copay, initial visit only	65% covered after deductible
In-Hospital Delivery & Newborn Nursery Services	85% covered after deductible	65% covered after deductible
<b>Short-Term Rehabilitation Therapy<sup>6</sup></b>		
Outpatient Physical, Speech, Occupational Therapy	85% covered after deductible; 60-visit combined maximum per year	65% covered after deductible; 60-visit combined maximum per year
<b>Emergency Services</b>		
Hospital Emergency Facility	85% covered after deductible and after \$250 copay	85% covered after deductible and after \$250 copay
Non-Emergency Care in a Hospital Emergency Room	Not covered	Not covered
Urgent Medical Care (at a non-hospital free standing facility)	85% covered after \$40 copay	65% covered after deductible
Non-Urgent Use of Urgent Care Provider (at a non-hospital free standing facility)	85% covered after deductible	65% covered after deductible
<b>Mental Health, Substance Abuse</b>		
Mental Health/Rehab & Detox Outpatient Coverage	\$25 copay	65% covered after deductible
Mental Health/Rehab & Detox Inpatient Coverage	85% covered after deductible	65% covered after deductible
Residential Treatment Facility (stays in a residential treatment facility for treatment of mental disorders, alcoholism or drug abuse)	85% covered after deductible	65% covered after deductible
MDLIVE Behavioral Therapy	\$40	Not applicable
<b>Other Benefits</b>		
Condition Management	BCBSTX Condition Management programs offer support for people diagnosed with chronic conditions such as asthma, diabetes, heart problems and others.	
Prescription Drugs	Prescription Drugs are covered through Express Scripts and not through BCBSTX. Please <a href="#">see page 23</a> for more information.	

(5) Your newborn is automatically covered under the plan for the first 31 days after the date of birth. If you wish to continue coverage for the newborn beyond that date, you must add the child to your medical coverage through the [My BMC Compensation & Benefits](#) website (select **Your Benefits Resources**) within 31 days after the newborn's date of birth.

(6) Additional plan authorization review required after 30 days.

**Important:** Other limitations may apply. Please review your plan documents for details.

## Kaiser HMO (Northern and Southern California)<sup>1</sup>

PLAN FEATURE	IN-NETWORK
Annual Deductible	\$0 single/\$0 all other coverage levels
Annual Out-of-Pocket Maximum	\$1,500 single/\$3,000 all other coverage levels
Lifetime Maximum Benefit	Unlimited
<b>General Medical Expenses</b>	
Primary & Specialist Doctor Office Visit	\$20 copay
<b>Inpatient Hospital Care<sup>3</sup> (requires preauthorization)</b>	
Hospitalization	100% covered
Inpatient Physician and Surgeon Services	100% covered
Inpatient Lab and X-ray	100% covered
Maternity and Delivery Services & Newborn Nursery Services <sup>2</sup>	100% covered
<b>Outpatient Care</b>	
Outpatient Surgery	\$20 copay
Outpatient X-ray & Laboratory Services	\$10 copay
<b>Emergency Services</b>	
Emergency Room	\$100 copay if not admitted to hospital/\$0 if admitted directly to hospital
Urgent Care Clinic	\$20 copay
Ambulance Services	\$50 per trip

(Kaiser HMO continues on page 19)

- (1) Review your medical plan details on the [My BMC Compensation & Benefits](#) website. Select **Your Benefits Resources**, hover over **Knowledge Center** and select **Plan Information**.
- (2) Your newborn is automatically covered under the plan for the first 31 days after the date of birth. If you wish to continue coverage for the newborn beyond that date, you must add the child to your medical coverage through the [My BMC Compensation & Benefits](#) website (select **Your Benefits Resources**) within 31 days after the newborn's date of birth.
- (3) Care outside of a Kaiser facility is limited to emergency care only.

## Kaiser HMO (Northern and Southern California) (continued)

PLAN FEATURE	IN-NETWORK
<b>Preventive Care</b>	
Annual Physical Exam & Immunizations	100% covered
Well-Baby & Well-Child Exams & Immunizations	100% covered
Well-Woman Exam	100% covered
Other Preventive Care	100% covered
<b>Mental Health, Substance Abuse Care</b>	
Mental Health: Outpatient Coverage	\$10 copay for group visit; \$20 copay for single visit
Mental Health: Inpatient Coverage	100% covered
Detox Rehab: Outpatient Coverage	\$5 copay for group visit; \$20 copay for single visit
Detox Rehab: Inpatient Coverage	100% covered
<b>Other Benefits</b>	
Durable Medical Equipment	20% coinsurance
Home Health Care	100% covered (up to 100 visits per calendar year)
Skilled Nursing Facility	100% covered (up to 100 days per benefit period)
Chiropractic Services	\$10 copay (up to 30 office visits per calendar year) plus a \$50 allowance per calendar year for chiropractic appliances
Covered Infertility Treatment	50% coinsurance
Prescription Drugs	Prescription drug coverage is provided through Kaiser. <a href="#">See page 23</a> for details.

## Health Savings Account

The BCBSTX HSA medical plan offers some unique features not available with the other medical plans.

When you enroll in the BCBSTX HSA Plan, you receive a BMC contribution that's based on who you cover and your base salary.

	If your base salary is \$75,000 or less		If your base salary is more than \$75,000	
	Employee-Only Coverage	Other Coverage Levels	Employee-Only Coverage	Other Coverage Levels
<b>BMC Contributes</b>	\$750	\$1,500	\$500	\$1,000
<b>You Contribute<sup>1</sup></b>	Up to \$2,650	Up to \$5,250	Up to \$2,900	Up to \$5,750
<b>Total 2017 contribution<sup>2</sup> allowed by the IRS (yours and BMC's)</b>	<b>\$3,400</b>	<b>\$6,750</b>	<b>\$3,400</b>	<b>\$6,750</b>

(1) You can **change HSA contribution amounts** at any time during the year. The new contribution amount is effective the first of the month following your contribution change.

(2) New to BMC? Any current year contributions you made to an HSA before joining BMC count toward the IRS annual contribution limits.

**Please note:** You are eligible for BMC's HSA contribution if you are actively employed by BMC on the date the company contribution is deposited to your HSA. (See page 21 for company contribution dates).

You can also make your own before-tax contribution into your HSA account through payroll deductions or with a personal check deposit. The IRS limits total annual contributions (employee and employer) to an HSA; the limit in 2017 for employee-only coverage is \$3,400 and \$6,750 for all other coverage. If you are age 55 or older, you can make an additional catch-up contribution of \$1,000.

**If you elect both payroll deductions and make a personal check deposit into your HSA, and that results in you exceeding the annual limits, BMC will not automatically turn off your payroll deductions. You are responsible for monitoring the balance in your HSA and contacting Your Spending Account to discontinue regular payroll deductions.**

The money in your account is always yours to keep, and it's up to you to decide whether you want to use your HSA to cover day-to-day health care expenses, as a savings vehicle for the future, or a combination of both.

**The money in your HSA always belongs to you and can't be forfeited, even if you leave BMC.**

The HSA can be either an effective way to save for retirement medical expenses or a means to cover the medical and prescription drug deductible and coinsurance today. The choice is yours.



### Your HSA Account

When you enroll in the BCBSTX HSA Plan, BMC sets up on your behalf an HSA account through Your Spending Account™ and UMB Bank. This process occurs automatically with your enrollment in the plan. In most instances, you will not need to take any additional action to open your HSA account; you will receive an HSA welcome kit along with your debit card when the account opening process is complete. However, sometimes UMB Bank will need additional information from you in order to open the account (verification of birth date, Social Security number or other information). If this occurs, you will receive notification in the mail at your home address from UMB Bank that additional information is needed. If you do not respond to this request within 60 days, your HSA account will automatically close, and you will be ineligible to make your own contributions or receive company contributions.

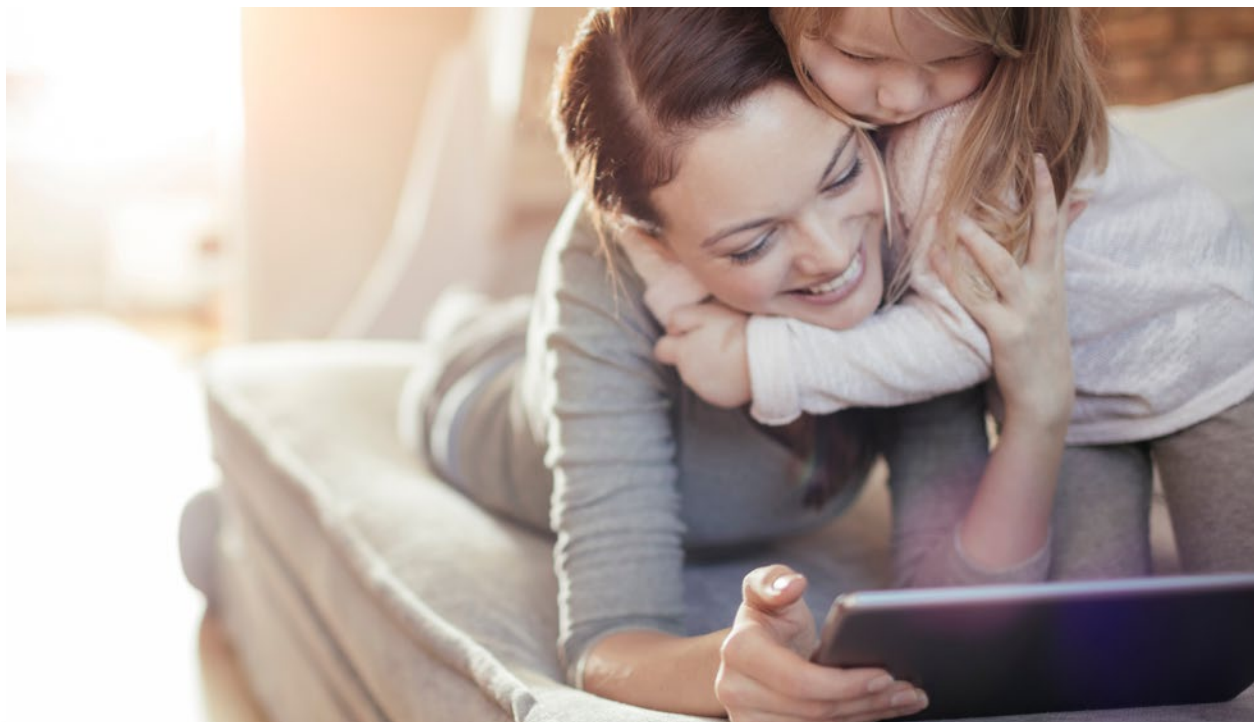
Once your account is open, BMC will deposit half of the company contribution in January and half in July. Newly hired employees will receive prorated amounts. Those hired between January 1 and June 30 will receive the entire annual amount, half within 30 days of when they become eligible and the other half in July. Those hired between July 1 and December 1 will receive 50 percent of the annual amount within 30 days of eligibility. If you were hired between December 2 and 31, you will not receive a company contribution for that calendar year. You are eligible for BMC's HSA contribution if you are actively employed by BMC on the date the company contribution is deposited to your HSA.

One of the main advantages of the BCBSTX HSA Plan is the opportunity to save any unused dollars in your account. If you don't spend all the money in your account during the year, the balance rolls over into the next year and is added to any future amount you elect to contribute.

Your HSA will earn interest at competitive money market rates and be credited each month. When your HSA base account balance reaches \$2,000, you can invest up to \$1,000 of your funds into a money market sweep account or select mutual funds. Because your HSA is intended to pay for health care costs, UMB requires that you maintain the remaining \$1,000 in your base account in case of health care emergencies. Complete information about your account, investment options, fees and legal considerations can be found on the [UMB HSA](http://hsa.umb.com) website (<http://hsa.umb.com>).

For more information, read [IRS Publication 969](#)—Health Savings Accounts and Other Tax Favored Health Plans.

*(Your HSA Account continues on page 22)*



### Eligible Expenses Under Your HSA

You can use your HSA for qualified health-related expenses as allowed by the IRS. Some expenses may not be covered by your health plan but are considered “eligible expenses” for payment with HSA dollars. Some typical examples include:

- Medical deductibles
- Diagnostic services not covered by your plan
- Dental and vision care not covered under an insurance plan
- Braces
- Long-term care premiums
- LASIK eye surgery
- Some nursing services
- Health care supplies
- Certain classes of over-the-counter drugs with a prescription

For more information, visit [Your Spending Account](#) or read **IRS Publication 969**.

### Easy Access to Your HSA

You will receive a Your Spending Account HSA debit card that allows easy access to your HSA funds. You can use the debit card to pay for all legitimate, permitted medical expenses under federal law. The choice of when and how to use the HSA debit card—or not to use it at all and let your HSA funds accumulate—is entirely up to you. You can also track your account balance, transfer funds to your personal checking account, and view deposit activity and interest earnings on the Your Spending Account website. If you contribute to a Limited Use FSA, you will use this same debit card to pay out-of-pocket expenses from this account. View your Health Savings Account online at the [My BMC Compensation & Benefits](#) website (select **Your Spending Account**).

### Using the YSA Card

You have the option of using your card as “credit” or with a Personal Identification Number (PIN) if your merchant accepts PIN transactions. When you activate your card, you will be asked to set up a four-digit PIN of your choice. To set up a PIN, call 1-888-999-0194 or the number on the back of your YSA card. You will be required to provide your card number, ZIP code, and three-digit security code located on the back of your card. After providing the information, you will be asked to select a four-digit PIN of your choice. The same PIN applies to all YSA cards on your account.



## Prescription Drugs

Prescription drug coverage is a benefit that allows you and your eligible dependents to obtain covered prescription drugs at negotiated prices. What you pay for prescriptions depends on:

- The medical plan you choose
- Whether you purchase more costly brand name medications or less costly generic equivalents
- Whether you buy your long-term maintenance medication from the Express Scripts Exclusive Home Delivery service or from a retail pharmacy.

### Here's a Snapshot of Your Prescription Drug Benefits:

- Express Script administers the Prescription Drug benefit for all employees enrolled in the BCBSTX HSA and BCBSTX PPO Plans.
- You have two options for filling prescriptions:
  - At a network retail pharmacy for your immediate short-term needs, such as an antibiotic to treat an infection.
  - Through the Express Scripts Exclusive Home Delivery service for maintenance medication you take regularly for an ongoing health condition, such as asthma, heart burn, or high cholesterol. You can save money and time by having the prescriptions you take regularly delivered to you by mail.
- Retail network pharmacies: You can fill a 30-day supply of maintenance medication through retail network pharmacies up to three times. **Beginning with the fourth fill, you'll be charged the entire cost of the drug if you continue to fill at a retail pharmacy.**
- Mail-order service: You can fill up to a 90-day supply of maintenance medication, plus three 90-day supply refills, through the mail-order service. For long-term maintenance medications, ask your physician to write two prescriptions:
  - One prescription for a 30-day supply if you need your medication right away, which you may fill at a local retail network pharmacy, and
  - A second prescription for a 90-day supply plus three 90-day supply refills to have filled through Express Scripts Exclusive Home Delivery.

Send the second, 90-day prescription to the Express Scripts Exclusive Home Delivery service. The first time you use the home delivery service, go to [express-scripts.com](http://express-scripts.com) and download the mail order form or call Express Scripts at 1-866-577-2523. Send the completed form with your prescription to the address provided on the form.

*(Prescription Drugs continues on page 24)*

### Prescription Drug Cost-Estimator Tool (BCBSTX medical plans only)

The **prescription drug cost-estimator tool** helps you estimate your prescription drug costs before you purchase your medications. You can compare prices on generic and brand-name drugs, as well as other drugs in the same class. Use this tool to learn more about opportunities for savings.

Here is a snapshot of your prescription drug benefits and what you pay:

PHARMACY BENEFIT MANAGER	Express Scripts <sup>1</sup>				KAISER PERMANENTE	
Medical Plan Benefit	BCBSTX HSA <sup>2</sup>		BCBSTX PPO		KAISER HMO	
	Retail	Mail Order	Retail	Mail Order	Plan Pharmacy	Mail Order
<b>Generic</b>	In-Network: 15% coinsurance after deductible	15% coinsurance after deductible (90-day supply)	In-Network: \$4 copay	\$10 copay (90-day supply)	In-Network: \$15 copay (100-day supply)	\$30 copay (100-day supply)
<b>Preferred Brand</b>	In-Network: 15% coinsurance after deductible	15% coinsurance after deductible (90-day supply)	In-Network: 20% coinsurance (\$40 min/\$85 max copay)	20% coinsurance (\$80 min/\$170 max copay) (90-day supply)	In-Network: \$35 copay (100-day supply)	\$70 copay (100-day supply)
<b>Non-preferred Brand</b>	In-Network: 15% coinsurance after deductible	15% coinsurance after deductible (90-day supply)	In-Network: 50% coinsurance (\$80 min/\$170 max copay)	50% coinsurance (\$160 min/\$200 max copay) (90-day supply)	Same as Preferred Brand drugs when approved in advance through an exception review	
<b>Specialty Drugs (Preferred)</b>	In-Network: 15% coinsurance after deductible	15% coinsurance after deductible (90-day supply)	In-Network: 20% coinsurance (\$40 min/\$85 max copay)	20% coinsurance (\$80 min/\$170 max copay, prorated for less than 90-day supply)		
<b>Specialty Drugs (Non-preferred)</b>	In-Network: 15% coinsurance after deductible	15% coinsurance after deductible (90-day supply)	In-Network: 50% coinsurance (\$160 min/\$200 max copay)	50% coinsurance (\$160 min/\$200 max copay, prorated for less than 90-day supply)		

(1) Any additional costs that you pay under the following plan provisions a) will not apply to your annual deductible or annual out-of-pocket maximum; b) will not be subject to the maximum copayment per prescription (PPO Plan)

- *Exclusive Home Delivery:* After three, 30-day fills at a retail pharmacy, you will need to refill your maintenance medication prescriptions with Express Scripts Exclusive Home Delivery service or you will pay the full cost of the medication.
- *Generic preferred:* If you obtain a brand-name drug when an equivalent generic drug is available, you will pay the brand name copayment (or coinsurance) plus 100% of the difference in cost. This additional cost applies regardless of whether your doctor prescribes a brand-name drug.

(2) The BCBSTX HSA Plan covers certain preventive prescription drugs—like insulin and blood pressure medicine—at 85% before the plan deductible. You pay 15% coinsurance for these medicines—even if you haven't satisfied the annual plan deductible. However, the coinsurance you pay for preventive prescription drugs does not count toward meeting the BCBSTX HSA annual deductible.

For more information on your prescription drug benefits, the drug cost category for your prescription (generic, preferred, non-preferred or specialty), and mail-order programs, please visit the Express Scripts website ([www.express-scripts.com](http://www.express-scripts.com)) or the Kaiser website ([www.kp.org](http://www.kp.org)).

## Medication Management

Express Scripts works with BMC to help you get the right kind of prescription medicine for your health, and to help you save money through medication management programs.

### Generic Preferred

If you obtain a brand-name drug (preferred or non-preferred) when an equivalent generic drug is available, you will pay the brand name copayment (or coinsurance) plus 100% of the difference in cost even if your cost exceeds the maximum copayment per prescription (PPO Plan). This additional cost applies regardless of whether your doctor prescribes a brand-name drug .

### Exclusive Home Delivery

You are required to fill all prescriptions you use on a regular basis, or for 90 days or more, through the Express Scripts Exclusive Home Delivery service. If you choose to continue using the retail pharmacy for these medications beyond the first three fills, you will pay 100% of the cost of the medication.

### Prior Authorization

Some medications require prior authorization from Express Scripts before you can buy them. A prescription may not be approved if it does not meet certain criteria. If it is not approved, you must pay the full cost of the prescription. To get prior authorization, your doctor must contact Express Scripts before the prescription is filled. Your doctor must provide the diagnosis, specific drug number, dosage and approximate treatment duration. If approved, your doctor will receive notification from Express Scripts.

### Smart Prior Authorization

Smart Prior Authorization automatically applies a set of rules for certain prescription drugs to determine if the medication, dose and quantity are appropriate for the patient's condition. By applying factors that are on file with Express Scripts — such as the member's medical history, drug history, age or sex — the drug can often be dispensed without further evaluation.

### Step Therapy

If you take medication to treat certain conditions, Express Scripts works with you and your doctor to see if you should first try a less expensive brand or over-the-counter drug before trying the brand-name-only medication (a process called “step therapy”). As part of the step therapy program, a message is automatically sent to the dispensing pharmacist to encourage him or her to check whether a generic or preferred brand medication would be appropriate for you or your covered dependents. If you attempt to fill a prescription for a higher-cost non-preferred medication without having first tried the preferred medication, your prescription will not be covered. (Note: You can still fill your prescription but you will be responsible for paying the full cost.) If this happens, your pharmacist can contact your doctor to ask if you can switch to a generic alternative, or you can speak to your doctor on your own.

### Quantity Management

Quantity Management means that for certain prescription drugs, Express Scripts will limit the amount you receive at one time based on the manufacturer's recommended dosages. It can also save you money by ensuring you receive the most cost-effective strength. If your doctor wants you to take more than the recommended amount, he or she can contact Express Scripts anytime to request pre-authorization and approval.

### If Your Claim is Denied

If you or a covered dependent receive a denial for a pharmacy benefit, you are entitled to a review of Express Scripts' decision. Detailed information about how to submit an appeal will be included in the benefit denial letter you receive from Express Scripts or you can call Express Scripts at 1-866-577-2523.

For more information, see [Frequently Asked Questions](#) about Medication Management.

*(Medication Management continues on page 26)*



- Certain prescription smoking cessation and weight reduction medications will be covered under the BCBSTX HSA and BCBSTX PPO Plans. Refer to the Express Scripts Preferred Drug List for more information. If you enroll in the BCBSTX PPO, the diabetic insulin copayment will be \$20 when obtained at a retail pharmacy and \$50 for mail order (90-day supply). The copayments for diabetic supplies under the BCBSTX PPO and BCBSTX HSA plans are \$10 for retail pharmacy and \$25 for mail order.
- Generic and single source preferred brand contraceptives are covered at 100% under the BCBSTX PPO, BCBSTX HSA and Kaiser HMO medical plans.
- The BCBSTX HSA Plan covers certain [preventive prescription drugs](#) — like insulin and blood pressure medicine —at 85% before the plan deductible. You pay 15% coinsurance for these medicines—even if you haven't satisfied the annual plan deductible. However, the coinsurance you pay for preventive prescription drugs does not count toward meeting the BCBSTX HSA annual deductible or out-of-pocket maximum.
- Prescription drug expenses under the BCBSTX HSA and PPO plans will count toward satisfying your annual out-of-pocket maximum.
- If you enroll in the Kaiser HMO, prescriptions will be covered through Kaiser pharmacies only.

### Dental

Whether you need major dental services or regular prevention with three cleanings per year, the Dental PPO plan can help you take care of your smile. The Dental PPO plan, administered by MetLife, is simple. You can see any dentist, but your savings will be greater if you use an in-network provider. Seeing PPO dentists can be more convenient as well, since most providers will file claims for you and you benefit from negotiated fees, reducing your out-of-pocket expenses. If you visit an out-of-network dentist, you'll pay for your services up front, and then submit a claim within 12 months of the date of service to receive reimbursement for eligible expenses.

The BMC Dental PPO plan also provides orthodontia coverage for you and your eligible dependents.

The plan reimburses 50% of usual and customary expenses up to a lifetime maximum of \$2,500 for each covered person. If the cost of your treatment is expected to be more than \$300, contact MetLife for a predetermination of benefits.

You share the cost of your dental coverage with BMC and make your contributions with before-tax payroll deductions.

MetLife does not provide dental ID cards, and you do not need one to receive care. You can provide your Social Security Number at your dental appointment or download a card at [www.metlife.com/mybenefits.com](http://www.metlife.com/mybenefits.com).

## Dental Plan Highlights

<b>Annual Deductible</b>	\$50 per person, \$150 maximum per family
<b>Annual Maximum Benefit</b>	\$2,500 per person
<b>Preventive Care</b> (two exams each calendar year; includes routine exams, X-rays and three cleanings)	100%, no deductible
<b>Annual Fluoride Treatment</b> (under age 19 only)	100%, no deductible
<b>Basic Restorative Services</b> (includes fillings, extractions, root canals and denture repairs)	80% after deductible
<b>Major Restorative Services</b> (includes inlays, crowns, bridges and dentures)	50% after deductible
<b>Orthodontics</b> (adults and children)	50%, no deductible - Lifetime maximum up to \$2,500 per covered person

For more information about the Dental PPO, go to online to [www.metlife.com/mybenefits](http://www.metlife.com/mybenefits) or call MetLife at 1-800-942-0854.

## Vision

If you or anyone in your family wears contacts or glasses, the BMC vision care plan, administered by VSP (Vision Service Plan), can help you bring things into focus. Under the plan, you can visit any provider. You'll receive the greatest benefit and convenience by using participating VSP providers—and never have to file a claim.

You pay for the cost of your vision coverage through before-tax payroll deductions.

### Using a Participating VSP Doctor

VSP does not require identification cards to obtain services. If you choose a participating doctor, you pay only a \$15 copayment for examinations and a \$15 copayment for lenses and frames (special frames or tinted lenses will cost more). Based on a limited fee schedule, VSP will reimburse you for examinations and lenses once every 12 months and for frames once every 24 months.

No claim form is needed. When you call to make an appointment for yourself or your covered dependents, identify yourself as a VSP member and as an employee of BMC Software; then provide your Social Security number. The VSP doctor will obtain the necessary authorization and information about your eligibility and coverage.

To find the VSP doctor closest to you or to check if a doctor is a VSP provider, contact VSP at 1-800-877-7195 or go online to [www.vsp.com](http://www.vsp.com).

*(Vision continues on page 28)*

Vision (continued)

PLAN BENEFITS	VSP PROVIDER BENEFITS	NON-VSP PROVIDER REIMBURSEMENT AMOUNTS
Vision Exam (once per calendar year)	100% after \$15 copay	Up to \$40
Eyeglass Lenses (once per calendar year)	100% after \$15 copay <sup>1</sup>	Up to \$40 (Single Vision) Up to \$60 (Bifocal) Up to \$80 (Trifocal) Up to \$125 (Lenticular)
Frames Adult (every two calendar years) Child (once per calendar year)	100% after \$15 copay (up to \$200)	Up to \$40
Necessary Contacts <sup>2</sup> (once per calendar year) Contact Lens Evaluation, Fitting Fees and Contact Lenses	100% after \$15 copay	Up to \$210
Elective Contacts <sup>3</sup> (once per calendar year) Contact Lens Evaluation, Fitting Fees and Contact Lenses	Up to \$200	Up to \$105

(1) Special frames and tinted lenses will cost more.

(2) Necessary contacts—required after cataract surgery; to correct extreme acuity problems that cannot be corrected with glasses; for certain conditions of anisometropia and keratoconus.

(3) Elective contacts—for any other reason than stated above and are covered instead of lenses and frames.



**Using a Nonparticipating Doctor**

If you choose to use a nonparticipating doctor, VSP will reimburse you based on a limited fee schedule described above. When submitting a claim to VSP from a nonparticipating doctor, use the BMC out-of-network VSP claim form and file your claim within six months of the date of service. Claim forms are available at [www.vsp.com](http://www.vsp.com)

## Employee Assistance Program (EAP)

At some time during the course of your employment, you or a family member may experience a personal difficulty. Problems arising from illnesses, day care issues, loss of a loved one, relationship conflicts or financial difficulties can affect your life at home and at work. Through the Employee Assistance Program (EAP), you and your immediate family members can receive confidential counseling and referrals at no cost to you. Any help you receive is completely confidential and not shared with BMC.

The EAP is designed to provide an assessment of the problem and offer a referral to a local resource for follow-up counseling. BMC provides the first six visits with a counselor at no cost to you. After that, your visits may be covered by your medical insurance.

### When to Use the EAP

Counseling is available through the EAP for personal difficulties such as:

- Family or marital problems
- Parenting concerns
- Emotional difficulties such as depression, anxiety and guilt
- Drug and alcohol dependence
- Grief over the death of a loved one or other losses
- Conflicts at work
- Job stress
- Crisis situations
- Questions about legal or financial concerns
- Questions about child or elder care

### How to Use the EAP

If you need assistance, you can call 1-800-327-1393 and speak to an EAP counselor. Sometimes a telephone call is all it takes. However, if you need additional counseling, you can schedule an appointment with an EAP counselor. BMC will pay for up to six counseling sessions each year. The EAP can also provide referrals to other providers or community sources if you need additional assistance.

In addition to traditional counseling sessions either in person or over the phone, our Employee Assistance Program includes the following additional benefit:

#### Financial Services

- One-half hour initial consultation with a selected plan financial counselor on up to three new financial counseling topics each plan year related to credit repair, debt management or debt consolidation.

The EAP website [magellanassist.com](http://magellanassist.com) also includes various other resources and educational materials on health and wellness topics, mental health, stress, substance abuse and daily life management. It also features a discount center where you can take advantage of BCBSTX's pre-negotiated discounts on a wide variety of products and services nationwide. To register on the Magellan site, enter the program's toll-free number 1-800-327-1393 on the Registration & Sign In page. From here, you'll set up a username and password to use for future visits to the site.

# Life & Accident Insurance

BMC Software provides you with a firm foundation of income protection benefits. In addition, you can supplement your company-provided coverage to further protect your income should you die or become disabled. Life and Supplemental Accidental Death and Dismemberment (AD&D) insurance is administered by Liberty Mutual. Business Travel Accident Insurance is administered by AC Newman & Co.

## Basic Life Insurance

**Benefits:** Two times your annual base salary, rounded to the next highest \$1,000\*

**Maximum Benefit:** \$2 million

*\*If you are working at age 70, your benefit will be reduced by 35%; at age 75, it will be reduced by 50%.*

## Understanding Imputed Income

The IRS considers the value of life insurance over \$50,000 to be taxable income. This value is referred to as “imputed income.” If you have coverage over \$50,000, you will see the value of such coverage reported on your annual W-2 statement. It will also be subject to FICA taxes and is reflected each payroll period on your paycheck stub as “GTL,” which stands for “group term life.”

## Accessing Living Benefits

This important benefit is provided at no cost to you and is designed to help a terminally ill employee receive part of his or her life insurance benefits for medical expenses and ongoing care.

Payment of this benefit is subject to approval by Liberty Mutual and certification by a doctor that your life expectancy is less than 12 months.

In general, the benefit pays up to 80% of the value of your basic life insurance coverage, with a maximum of \$500,000. You will receive the money in a single lump-sum payment.

## Designating or Updating Beneficiary Information

Beneficiary designations for BMC’s plans are important to ensure your death benefits go directly to the people you intended to receive them. You’ll want to review your beneficiary designations after a major life event, such as a new baby, marriage, death or divorce.

To make changes to your life and accident death and dismemberment (AD&D) insurance beneficiaries, go to [the My BMC Compensation & Benefits](#) site, and select **Profile>Life Insurance Beneficiaries**. You can also call the Benefits Center at 1-877-262-4849 and select **Your Benefits Resources** when prompted.



## Supplemental Life Insurance

Depending on your individual needs, you can purchase additional life insurance for yourself and your family. The amounts of coverage you can purchase are listed below:

<b>EMPLOYEE</b>	One to five times your annual base salary (combined maximum with basic life insurance is lesser of seven times base salary or \$2 million).
<b>SPOUSE/DOMESTIC PARTNER</b>	You can purchase life insurance for your spouse/domestic partner in \$25,000 increments—up to the lesser of your total life insurance amount or \$250,000. If you do not purchase supplemental employee life insurance, you can still purchase spouse/domestic partner life insurance.
<b>CHILDREN*</b>	You can purchase life insurance for your eligible children in the amount of \$5,000, \$10,000 or \$15,000. Please note: Coverage amount for live birth to less than six months of age is \$1,000.

*\* If you purchase life insurance for your children, the coverage amount you select will apply to each of your eligible children. For example, if you have a son and a daughter and select \$10,000 as your dependent life insurance amount, both of your children will have dependent life insurance in the amount of \$10,000.*

### Coverage Costs

You pay the entire cost of your supplemental and dependent life coverage with after-tax dollars deducted from your pay each month. The price for coverage is based on your age as of January 1 of the current plan year and increases as you age and move through five-year age bands. For example, if you (or your spouse) are in age band 40 to 44 and you turn age 45, you'll move to the 45 to 49 band and pay more for coverage.

### Evidence of Insurability

The amount of supplemental employee and spouse life insurance coverage elected determines whether you and your spouse/domestic partner are required to show evidence of insurability (EOI).

#### Evidence of Insurability is Required:

<b>AT EMPLOYMENT</b>	If coverage amounts elected are greater than \$500,000 when combined with basic life insurance amount (employee) or greater than \$25,000 (spouse/domestic partner).
<b>AT ANNUAL ENROLLMENT</b>	If coverage amounts elected are more than one coverage level higher than your current coverage amount.

### Need Help Filing for Benefits?

For assistance filing a life insurance claim, speak with a Benefits Representative by calling Your Benefits Resources at 1-877-BMC-4849.



## Supplemental AD&D Insurance

This benefit is paid if an accident causes a death. Benefits also are paid if a serious injury is suffered. Such benefits are paid as follows:

- If, as the result of an accident, the person dies within 365 days of the accident, the beneficiary will receive AD&D benefits equal to 100% of the insurance amount—in addition to the life insurance benefit.
- If the person injured is in an accident and suffers the loss of a limb and/or eyesight, the beneficiary will receive a portion of the full benefit amount, based on the extent of the loss, as indicated below:

LOSS	BENEFIT
Both hands or both feet or both eyes, or one hand and one foot, or one hand and one eye, or one foot and one eye	100% of insurance amount
One hand or one foot or one eye	50% of insurance amount

A complete list of loss events and benefits is available online on the [My BMC Compensation & Benefits](#) website. Select **Your Benefits Resources**, then hover over **Knowledge Center** and select **Plan Information**. The Life and Accident Insurance benefits are described in the Life Insurance Certificate of Coverage.

WHO YOU CAN COVER	LEVEL OF COVERAGE
Employee	One to five times your annual base salary (maximum benefit of \$500,000)
Employee + Family	<ul style="list-style-type: none"> <li>■ 50% of employee amount for your spouse or domestic partner</li> <li>■ 15% of employee amount for each child</li> </ul>

## Business Travel Accident

This plan provides a benefit if you are accidentally injured while traveling on behalf of BMC Software. BMC provides this benefit at no cost to you.

LOSS	BENEFIT
Life	Up to two times your annual base salary (maximum benefit of \$1.5 million)
Both hands or both feet or both eyes, or one hand and one foot, or one foot and one eye, or one eye and one hand, or both speech and hearing	100% of life insurance benefit
One hand or one foot or one eye; or speech or hearing	50% of life insurance benefit
Thumb and index finger of same hand	25% of life insurance benefit

## Global Emergency Services

Increased business travel means increased instances of illness or injury while away from home. With one phone call, you can get immediate emergency travel assistance when you travel on BMC business more than 100 miles from home or to any foreign country.

Emergency travel assistance is provided by Assist America. A global network of Assist America's emergency medical dispatch-certified personnel are on call 24-hours-a-day, 365-days-a-year to help you with a wide range of assistance services at no cost to you. Services include:

- Medical consultation and evaluation
- Hospital admission guarantee
- Emergency medical evacuation
- Critical care monitoring
- Prescription replacement assistance
- Medically supervised transportation home upon discharge
- Emergency message service
- Transportation for a friend or family member to join hospitalized patient
- Care for minor children
- Emergency room trauma counseling
- Assistance in the return of a vehicle
- Legal and interpreter referrals

All services must be arranged and paid for by America Assist.

### How To Use This Service

Before you travel, be sure you have your:

- Assist America Global Emergency Services wallet card with BMC reference number
- BMC medical and/or prescription ID card(s)

During a medical emergency, call 911 in the U.S. or local emergency services, and then call the Assist America Operation's Center as soon as possible (once your situation is no longer life threatening). Once you are under the care of a physician or medical facility, your BMC medical coverage applies.

### BMC Business Travel Hub

Visit the BMC Business Travel Hub at [mybmcbta.com](http://mybmcbta.com), your one-stop source for information about benefits that cover you while traveling away from home on BMC business.

# Flexible Spending Accounts

You can set aside before-tax money throughout the year in a flexible spending account (FSA) to pay for anticipated health care and/or dependent care expenses. You'll not only build a balance of funds to pay expected medical, dental, vision and dependent care bills incurred during that calendar year, but you'll also lower your taxes.

There are two types of flexible spending accounts associated with health care expenses—a regular Health Care Spending Account and a Limited Use Flexible Spending Account. If you select the BCBSTX PPO, the Kaiser HMO or opt out of BMC medical coverage, you are eligible to contribute to the Health Care Flexible Spending Account. If you select the BCBSTX HSA Plan, you are eligible for the Limited Use FSA. The Limited FSA can be used to pay eligible dental, vision and other nonmedical expenses.

## Health Care FSA

If you enroll in the BCBSTX PPO Plan or the Kaiser HMO Plan, you can make before-tax contributions to the Health Care FSA which can be used to pay for eligible medical, dental, prescription drug and vision care expenses, health care supplies and certain over-the-counter (OTC) medications (only with a prescription). Such expenses may include:

- Copayments
- Deductibles
- Prescription medications
- Insulin and diabetic supplies
- Charges for services or supplies that are not covered (or not fully paid) by your health plan, such as braces, hospital bills and speech therapy

You can contribute from \$240 to \$2,550 each year to the Health Care FSA. Your deduction per pay period is based on 24 pay periods for the year. If you join BMC during the year, deductions for your elected contribution amount are divided evenly among the pay periods remaining in the year at the time you enroll.

Eligibility for Health Care FSA reimbursements is limited to you and your legal spouse and children. Federal law prohibits the use of FSA funds for reimbursement of expenses for your domestic partner and your partner's children unless they are your legal tax dependents.

## Limited Use FSA

This FSA is available only if you enroll in the BCBSTX HSA medical plan. You can contribute from \$240 to \$2,550 each year to the Limited FSA. A Limited Use FSA gives you the option to use before-tax money to pay for nonmedical expenses without tapping into your HSA funds, which you may be accumulating for retirement. There are two ways to use the Limited Use FSA.

- 1) Before you meet your BCBSTX HSA medical plan deductible, your Limited Use FSA funds are available only for certain nonmedical expenses, including:
  - Dental care and orthodontia, such as fillings, X-rays, braces, caps and mouth guards (not oral surgery)
  - Vision care, including eyeglasses, contact lenses, solutions and supplies, and LASIK eye surgery
- 2) After you meet your deductible, your Limited Use FSA funds are available for all FSA-qualified health care expenses incurred after the date you met your deductible, including coinsurance and copayments—just like a Health Care FSA.

Find more information on the Limited Use FSA on the [My BMC Compensation & Benefits](#) website (select **Your Spending Account**).



The Limited FSA is available only if you enroll in the BCBSTX HSA medical plan.



## Dependent Care FSA

Your before-tax contributions to the Dependent Care FSA can help you pay for dependent day care expenses that allow you (or you and your spouse or domestic partner) to work. If you're married and your spouse does not work, you are not eligible for this program—unless your spouse is disabled or is a full-time student.

For the purposes of this plan, the IRS defines eligible dependents as:

- Your child(ren) under age 13

OR

- Other dependents (such as a spouse, parent, brother, sister or child over age 13) who spend at least eight hours in your home each day and are incapable of self-care

Generally, you and your spouse can contribute from \$240 up to \$5,000 annually to the Dependent Care FSA (\$2,500 if you are married and file separate tax returns). Your deduction per pay period is based on 24 pay periods for the year. If you join BMC during the year, deductions for your elected contribution amount are divided evenly among the pay periods remaining in the year at the time you enroll.

Reimbursable expenses include:

- Day care expenses
- In-home services provided by a babysitter, nursing aid or attendant
- Services provided by a housekeeper or maid, if that person is responsible for the care of an eligible dependent during the day
- Services provided by a licensed day care facility for children or adults
- Care provided outside your home

Expenses incurred for dependent day care while the employee is on an unpaid leave and expenses for overnight camp are ineligible for FSA reimbursement.

**Special Note:** When you request reimbursement from your Dependent Care FSA and when you file your federal income tax return, you will need to provide your caregiver's Social Security or tax identification number.

Dependent care expenses are for services such as professional day care they do not include medical expenses for dependents.



## Using Your Flexible Spending Account

### Health Care FSA

If you have a Health Care FSA, you can use the money in that account to pay for out-of-pocket expenses. Use the Your Spending Account card like a debit card or file a claim. To view your balance, go to the [My BMC Compensation & Benefits](#) website (select **Your Spending Account**).

Expenses paid using the Your Spending Account debit card do not require you to submit a paper claim. Substantiation of your expense(s) may be required at any time, so keep all receipts and/or Explanation of Benefit forms. YSA will notify you if itemized receipts or additional documentation is required to validate your purchase. You'll have 90 days to provide the requested documentation.

### Limited Use FSA/Health Savings Account

You will use a single debit card to access funds from both your Health Savings Account and from your Limited Use FSA, if you contribute to this account. Expenses paid from your Limited Use FSA may require substantiation. Expenses paid from the Health Savings Account do not require substantiation. View your Health Savings Account or Limited FSA balance on the [My BMC Compensation & Benefits](#) website (select **Your Spending Account**). If you have a Health Savings Account and contribute to a Limited Use FSA, here's how the YSA card works to pay for eligible expenses:

When you use the YSA card to pay for...	Funds are taken from your...
Dental and vision care expenses	Limited Use Flexible Spending Account
Medical services and prescription drugs	Health Savings Account

### Using Your Limited Use FSA for Medical Expenses

You can begin paying for eligible medical services and prescriptions drugs with your Limited Use FSA once you've met your HSA Plan deductible (\$1,500/\$3,000).

To start using your Limited Use FSA, go online to the YSA website and submit a copy of the BCBSTX Explanation of Benefits showing the medical claim that satisfied the HSA Plan deductible. You will receive an email from YSA within 24 to 48 hours confirming that you can begin submitting medical and prescription drug expenses for reimbursement.

### Carry Over up to \$500

When you enroll in the Health Care FSA, you are allowed to carry over up to \$500 of your unused balance to the following plan year. The amount carried over will automatically be added to your new plan year balance and immediately be available to pay for qualified medical expenses. The carried over amount will not count toward the annual maximum contribution you can make to your Health Care FSA in the coming year. The most you can carry over from one year to the next is \$500. If you have more than \$500 in your account at the end of the year, you will lose it.

### Dependent Care FSA

It's important that you carefully estimate your anticipated dependent care expenses so that you can elect the most appropriate level of annual contributions. In compliance with the Internal Revenue Service Code, any money in your Dependent Care FSA not used by the end of the year (December 31) can't be returned to you or "carried over" to the following plan year.

*(Using Your Flexible Spending Account continues on page 38)*

## Special Note

Go to the [My BMC Compensation & Benefits](#) website (select **Your Spending Account**) to:

- Estimate how much to contribute to the Flexible Spending Account(s).
- Check your FSA or HSA balances.

### Direct Deposit

When you file a claim, you can choose to have your reimbursement sent to you in a check or directly deposited into your checking or savings account. Complete the online direct deposit authorization form, available on the [My BMC Compensation & Benefits](#) website (select **Your Spending Account**).

### Things To Know About Flexible Spending Accounts

When making your contribution decision, take the time to carefully evaluate your personal situation, consult with your tax advisor and consider the following facts:

- Your Health Care FSA and your Dependent Care FSA must be maintained separately; you cannot transfer money between the two accounts.
- You cannot claim a tax credit or deduction for any expenses reimbursed from your accounts. However, you can claim a tax credit or deduction for any unreimbursed expenses, subject to IRS regulations. Consult with your tax advisor to determine which option is more beneficial to you.
- The list of services eligible for reimbursement can change from time to time. For complete details, see [IRS Publication 502](#) (health care) or [503](#) (dependent care). See more information and a complete list of qualified health care expenses on the [My BMC Compensation & Benefits](#) website (select **Your Spending Account**).
- Once you enroll in the Health Care FSA or Dependent Care FSA, you cannot change your contribution level until the next annual enrollment period, unless you have a qualifying change in family status (life event) that complies with IRS requirements ([See page 6](#)).
- If you leave the company, you can continue to file claims against your Health Care FSA balance for expenses incurred before your employment with the company ended. If you make after-tax contributions, you also may be eligible to continue your participation in the Health Care FSA under COBRA and incur reimbursable expenses until the end of the calendar year in which your employment with BMC terminated.
- If you terminate your employment with the company and do not elect to continue contributions to your Health Care FSA under COBRA or you are not eligible to do so under COBRA, you must submit any outstanding claims within 90 days of the end of the plan year in which your employment ends.
- If you terminate your contributions to the Health Care FSA because of a qualified family status change (life event), you will be reimbursed only for claims incurred prior to the date you stopped contributions, and for any claims to be eligible for reimbursement, they must be submitted within 90 days of the status change.
- If you enroll in one or both accounts because of a qualified family status change, only expenses incurred after the enrollment date are acceptable.

If you have any questions about your participation in a flexible spending account, call Your Spending Account at 1-877-BMC-4849.

### Getting Claims Help — Participant Advocacy Team

The Participant Advocacy service is available to help you resolve any conflicts you may have with your medical, dental or health care/dependent care FSA claims and carriers. Call Your Benefits Resources at 1-888-886-8734 to speak to an Advocate between 7 a.m. and 6 p.m. Central, Monday to Friday. All calls are confidential.

## FSA and HSAs Compared

The Flexible Spending Accounts (FSAs) and Health Savings Accounts (HSAs) are an affordable way to save money on health care. FSAs and HSAs operate differently. Here's how.

	DEPENDENT CARE FSA	HEALTH CARE FSA	LIMITED USE FSA	HEALTH SAVINGS ACCOUNT
Who can participate	If you anticipate eligible dependent day care expenses.	If you enroll in the PPO or HMO or do not elect any BMC medical plan	If you enroll in the BCBSTX HSA Plan	If you enroll in the BCBSTX HSA Plan
What happens to unused contributions	Subject to the "use it or lose it" rule; you forfeit them at the end of the year	You can carry over up to \$500 from one plan year to the next	You can carry over up to \$500 from one plan year to the next	Any unused contributions remain in your account for future health care expenses
Contribution type	Before-tax contributions			
How much can I contribute	Contribute from \$240 to \$5,000 per year	Contribute from \$240 to \$2,550 per year	Contribute from \$240 to \$2,550 per year	Single: \$3,400 All other coverage levels: \$6,750  If you are 55 or older, you can deposit up to an additional \$1,000.
What expenses are eligible	Any eligible dependent day care expenses – as qualified by the IRS and incurred during the year	A full range of qualified medical expenses – as qualified by the IRS and incurred during the calendar year	Dental and vision expenses only (until you meet your deductible) and a limited range of expenses after you meet your deductible) – as qualified by the IRS and incurred during the calendar year.	A full range of qualified medical expenses – as qualified by the IRS
When can I change the contribution amount	The amount you contribute cannot change during the year unless you have a qualified status change (life event).			Change contribution amounts anytime
When are expenses reimbursed	All eligible expenses are reimbursed when you file a claim. However, reimbursements can only be made as funds become available from payroll deductions.	All eligible expenses are reimbursed when you use your debit card or file a claim up to the full amount of your annual contribution, regardless of the actual amount of money that has been deposited into your account through payroll deductions.	All eligible expenses are reimbursed when you use your debit card or file a claim up to the full amount of your annual contribution, regardless of the actual amount of money that has been deposited into your account through payroll deductions.	All eligible expenses are reimbursed when you file a claim or use your debit card. However, reimbursements can only be made as funds become available from payroll deductions or company contributions are deposited.

# Financial Benefits

## BMC 401(k) Plan

Wealth accumulation and financial security during retirement are top long-range objectives for most people. The BMC Software, Inc. Savings and Investment Plan (a 401(k) plan) gives you a distinct head start on reaching your financial goals. When you enroll in the plan, you elect to defer a certain percentage of your pay as a contribution to the plan. Your contributions may be made on a before-tax basis, after-tax basis, or through Roth 401(k) contributions. The plan's combination of before-tax savings, company matching contributions and wide range of investment alternatives makes it one of the most attractive savings opportunities available.

You are eligible to enroll in the BMC 401(k) Plan on your date of hire. Once your new hire information is submitted to Fidelity and an account is set up, you can enroll at any time. You will see the change in your deductions in one to two pay periods.

To enroll in the BMC 401(k) Plan go to Fidelity NetBenefits® ([www.netbenefits.com](http://www.netbenefits.com)) or call 1-866-546-4424.

### Enrolling in Your BMC 401(K) Plan

Log on to [www.netbenefits.com](http://www.netbenefits.com) or call Your Benefits Resources at 1-877-BMC-4849, (option Savings and Investments), or Fidelity directly at 1-866-546-4424 to enroll, to make your “catch-up” contribution election and/or to change any existing election.

Allow one week from your date of hire before calling. If you are a current participant, the changes will take effect within one to two pay periods.

### Your Contributions

You can contribute between 1% and 35% of your plan earnings into a before-tax or Roth account, up to the annual IRS dollar limit (for 2017 this limit is \$18,000). In addition, you can contribute up to 10% of your plan earnings into an after-tax account. Plan earnings generally include many elements of cash compensation (such as base salary, short-term incentive, bonuses, overtime and commissions). If you are age 50 or older or will reach age 50 during the calendar year, you can make “catch-up” contributions to your account in addition to your regular contributions, up to the annual IRS dollar limit (for 2017 this limit is \$6,000).

Please Note: The total of all contributions to your account cannot exceed \$53,000. This includes any before-tax, Roth, after-tax and company matching contributions made to the plan (excluding catch-up contributions).

**Your Account — Your Choice**

The BMC 401(k) Plan allows you to make tax-advantaged contributions three different ways—to a before-tax account, a Roth 401(k) account or to an after-tax account. If you are wondering which contribution type is better for you—tax-deferred savings now (through the before-tax contributions), tax-free in the future (through the Roth feature) or defer taxes on earnings on after-tax money—look at the chart below. You can go to Fidelity NetBenefits® ([www.netbenefits.com](http://www.netbenefits.com)) for more information on all of these options. You may also want to consult with a personal tax advisor about the path that might be best for you.

	<b>BEFORE-TAX CONTRIBUTIONS</b>	<b>AFTER-TAX CONTRIBUTIONS</b>	<b>ROTH CONTRIBUTIONS</b>
<b>Tax Treatment of Contributions</b>	Contributions reduce taxable income.	Contributions are deducted after taxes and therefore do not reduce current taxable income.	Contributions are deducted after taxes and therefore do not reduce current taxable income.
<b>Tax Treatment of Earnings</b>	Earnings grow tax-deferred until taken as a distribution.	Earnings grow tax-deferred until taken as a distribution.	Earnings grow tax-deferred and are not taxed at distribution if taken after 59 1/2 and at least 5 years has passed since your first year of Roth 401(k) contributions.
<b>Tax Treatment of Distributions, If Not Rolled Over</b>	Distributions are fully taxable at the time of withdrawal.	Distributions of the after-tax contributions are not taxable; however, the earnings on the contributions are taxable at the time of withdrawal.	Distributions are not taxable as long as you are at least 59 1/2 years old and it has been at least 5 years since your first year of Roth 401(k) contributions. Company match and associated earnings are taxed.
<b>Early Withdrawal Penalties</b>	Distributions taken before age of 59 1/2 are subject to a 10% tax penalty unless you terminate service after attainment of age 55.	Earnings withdrawn prior to age 59 1/2 are subject to a 10% excise tax.	Distributions of Roth earnings taken before age 59 1/2, or with less than 5 years from the first contribution, are subject to at 10% tax penalty.
<b>In-Service Withdrawal</b>	In-service withdrawal options are only a loan or hardship withdrawal prior to age 59 1/2.	After-tax contributions and earnings may be taken as an in-service withdrawal.	In-service withdrawal options are only a loan or hardship withdrawal prior to age 59 1/2.
<b>Contribution Limit (2017)</b>	\$18,000 (combined with Roth contributions)	10% of pay (coordinates with other contributions and match to not exceed \$53,000 in 2017)	\$18,000 (combined with before-tax contributions)
<b>Catch-Up Contribution Limit (age 50 or older)</b>	\$6,000 (combined with Roth catch-up)	N/A	\$6,000 (combined with before-tax catch-up)

(BMC 401(k) Plan continues on page 42)



### Company Contributions

BMC helps your retirement savings grow by matching your before-tax or Roth contributions. BMC matches 100% of every dollar you contribute, up to 5% of your eligible pay each pay period.

**Please Note:** Company matching contributions are made each pay period with your payroll contributions. There is no company match on after-tax or catch-up contributions.

The [BMC 401\(k\) Deferral Calculator](http://www.bmcsavingstools.com) is available on Fidelity NetBenefits® ([www.bmcsavingstools.com](http://www.bmcsavingstools.com)). This tool can help you determine your maximum contribution amount and help you maximize company contributions to your account. If you plan to contribute more than 5% of your eligible earnings, note that as soon as your contributions reach the annual IRS dollar limit (\$18,000 in 2017), your contributions and matching contributions will end. In addition, when you reach the annual IRS dollar limit on earnings (\$265,000 in 2017), your participation for the year will end.

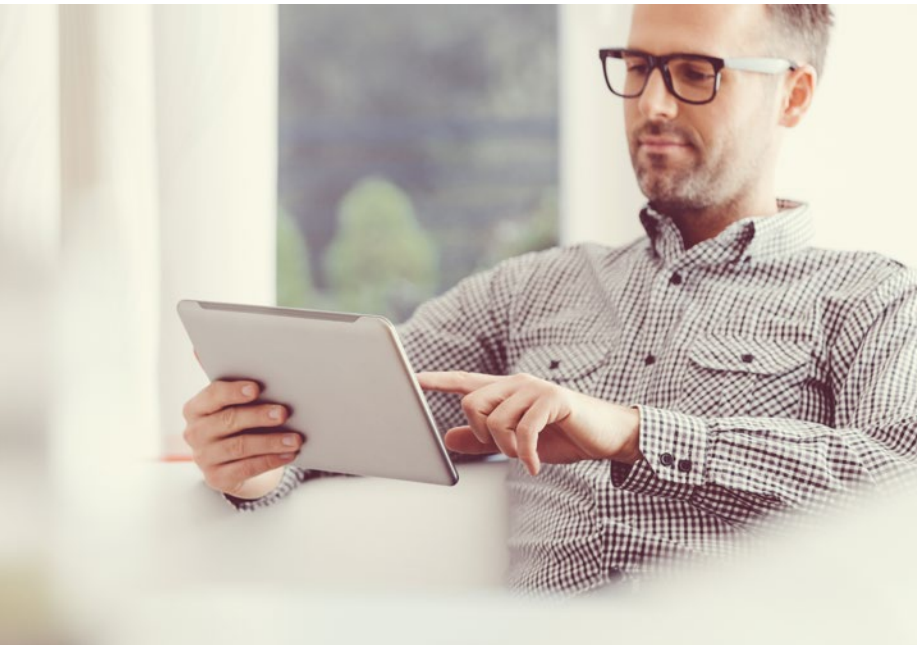
Check your year-to-date contributions by reviewing your pay stubs or by going online to Fidelity NetBenefits and running a year-to-date statement. You can change your contribution rate at any time.

### Vesting

You are always 100% vested in your own contributions and in any earnings on those contributions. You will be 100% vested in the company matching contributions and earnings when you have reached two years of service.

### Loans & Withdrawals

The BMC 401(k) Plan includes a loan provision, allowing you to borrow money from your account. If you are in need of funds that aren't readily available elsewhere, you can borrow up to 50% of your vested account balance or \$50,000, whichever is less, minus the highest outstanding loan balance during the last 12 months. BMC 401(k) Plan participants who take loans from the plan will be responsible for associated administration fees.



BMC matches 100% of every dollar you contribute, up to 5% of your eligible pay each pay period.

Under limited circumstances, you can make withdrawals from the plan. You can make withdrawals at any time on your after-tax contributions made to the plan after January 1, 2008. You can make withdrawals at any time on rollover funds from prior employer plans that you deposited into the BMC 401(k) Plan. In case of financial hardship, you may be eligible for a special hardship withdrawal of funds from your 401(k) account if you have previously borrowed money from your account.

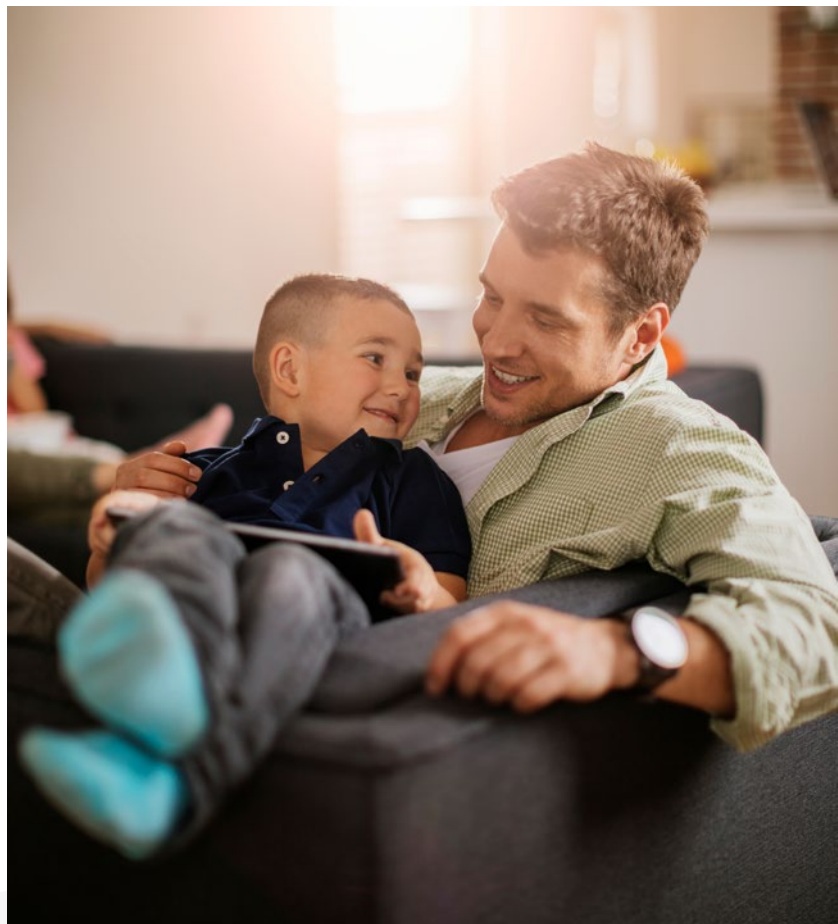
### **Your Investment Choices**

To help you meet your financial goals, the plan offers you a range of investment options, including conservative, moderately conservative and aggressive options. The plan also offers the Fidelity Freedom K Funds®, each one offering a blend of stocks, bonds and short-term investments within a single fund. Each Freedom Fund's asset allocation is based on the number of years until the fund's target retirement date. The Freedom Funds are designed for investors who want a simple approach to investing for retirement.

If you do not choose an investment election, your contributions will default to the Fidelity Freedom K Fund that has a target retirement date closest to the year you might retire based on your current age, assuming retirement at age 65, until you provide further investment instruction. You can learn more by contacting Your Benefits Resources at 1-877-BMC-4849, (option Savings and Investments), or Fidelity directly at 1-866-546-4424. For those who prefer a more hands-on approach to managing their account, the plan provides an individual brokerage option that permits purchases of a wide range of mutual funds plus individual stocks and bonds.

The Fidelity Portfolio Advisory Services (PAS)—an optional feature—puts your 401(k) account under professional investment management. There is an annual fee to maintain the account, and it varies based on your account balance.

Fidelity Investments can answer your financial questions and provide one-on-one support as you build a plan for your financial future. Call Fidelity at 1-800-603-4015 or visit a branch nearest you for a complimentary consultation.



# Paid Time Off & Holidays

BMC recognizes that in order to do your work well, you also need time away from work to refresh and renew. That's why BMC offers you paid time off from work.

## How PTO/Vacation Works

Our Paid Time Off (PTO)/Vacation program provides each eligible employee an amount of paid time off based on length of service, employment status and hours worked per week. PTO/Vacation provides employees with control and flexibility and may be used for any reason, such as personal travel to care for a family member, for personal business or just a day off. Depending on your reason for taking time off under the PTO/Vacation program, you may also be eligible for FMLA leave. [See page 48](#) for more information.

During the first partial calendar year of BMC employment, eligible full-time employees will accrue (earn) the pro-rata equivalent of 15 days per year, calculated on a daily basis (.041 days of vacation time per calendar day). Beginning the first full calendar year after your hire date, PTO eligibility is as follows:

YEARS OF SERVICE	ANNUAL ACCRUAL	DAILY ACCRUAL
1 to 4	15 days	.041
5 to 9	20 days	.055
10	25 days (maximum)	.068

Exempt employees can use vacation time in full-day or half-day increments. Non-exempt employees can use vacation time in hourly increments.



## Part-Time Employee Eligibility

Part-time employees working between 20 and 40 hours per week are eligible for a prorated amount of PTO hours based on the percentage of hours worked. For example, if you have less than five years of service and work 24 hours a week (60% of the work week) you will be eligible for nine days of vacation time annually (60% of the full time allowance of 15 days). Part-time employees working less than 20 hours per week do not receive any PTO/vacation time.

## Carry-Over

You must use your PTO/Vacation time during the current calendar year unless you are a California employee. Unused PTO/Vacation not taken by December 31 will be lost. California employees may carry over unused accrued PTO/Vacation, up to the maximum days available in a calendar year based on years of service.

If you are unable to complete your previously scheduled and approved vacation by December 31, because of heavy workload or another business reason, management may, at its discretion, grant an extension through January of the following year.

## Termination

If you leave BMC for any reason, voluntary or involuntary, you will be paid for unused vacation time you earned to date. California employees will be paid for PTO/Vacation time earned to date plus any accrued PTO/Vacation time carried over from the prior year, subject to the maximum accrual amount.

Questions about PTO payouts at termination should be directed to Ask HR at 1-713-918-2ASK (2275) or 1-800-811-6367 or log a help desk ticket at Ask HR Help Desk Ticket.

## Holidays

BMC generally schedules 11 holiday days each year in the U.S. You can view the holiday schedule on the HR – U.S. Country Site under the Global People Portal on the BMC intranet.

All full-time and part-time employees are eligible for holidays. Holidays can't be carried over into the next year, and employees do not receive pay for unused holidays, although some employees who are required to work on scheduled holidays may be eligible for substitute time off agreed to in advance with the manager. Employees on a leave of absence are not eligible for holiday pay.

Part-time employees must be scheduled to work on the holiday to receive holiday pay. Employees who record their time using Oracle Time and Labor (OTL) should enter the hours they would have normally worked on the timesheet as "holiday" (not to exceed 8 hours).

## Sick Time

Full-time employees scheduled to work 30 or more hours per week are eligible for sick time benefits. You may use sick time for personal illness, injury or for personal doctor or dentist appointments when you can't schedule them around work hours. You may be required to provide medical documentation to support your need to be out of the office.

If you will be off work longer than three business days due to illness, you should file an FMLA claim with Liberty Mutual for your leave. If your illness extends to five business days or longer, you must file a disability claim with Liberty Mutual. [See page 48](#) for more information on FMLA and disability benefits.

*(PTO & Holidays continues on page 46)*

### Leaves

In addition to PTO and holidays, BMC offers the following paid and unpaid leaves to U.S. employees.

#### **Bereavement or Funeral Leave**

In the event of a death in your immediate family (your spouse, domestic partner, child, stepchild, parent, sibling, step-sibling, grandparent, mother-in-law or father-in-law, or brother-in-law or sister-in-law), you will be eligible for paid time off. Full-time employees are eligible for three business days off, and part-time employees are eligible for leave for the scheduled work hours that fall within the three-day leave period. You will receive full pay and benefits for the bereavement leave.

Please call your manager immediately to inform him or her of your loss and impending absence. If your absence will last longer than the leave granted above, you may request additional time off in the form of unpaid leave or PTO/Vacation time.

#### **Parental Bonding Leave of Absence**

The BMC Parental Bonding Leave of Absence Program may allow up to ten weeks off (2 weeks paid and 8 weeks unpaid) to birth, adoptive or foster parents to care for a new baby or child. Parental Bonding Leave must be taken all at once, not intermittently, and be used within 12 months of the child's birth, or placement with you for adoption or foster care.

You must notify and receive written approval from your immediate manager in writing 14 days before the first day of the planned parental leave, where possible. For more details, please refer to the [Parental Bonding Leave of Absence Policy](#) posted on the BMC intranet.

#### **Jury Duty**

Your pay and benefits continue while you are on jury duty. You also may keep any payments made by the court for jury duty service. Please notify your manager as soon as possible after you receive notice to report for jury duty. Your manager may ask you to provide a copy of your jury duty summons.

#### **Job Abandonment**

It is important to keep your manager informed of the reason for your leave and the length of time you will be away from work. If you do not notify BMC of your leave and you are absent for three consecutive days, BMC will consider that you have abandoned your position and voluntarily resigned.

# Disability Benefits

## Short- & Long-Term Disability

BMC's sick time and disability programs work together to help pay your household expenses if you become disabled and cannot work. BMC pays 100% of the cost of this coverage, and enrollment is automatic.

The chart shown below illustrates your benefits under our sick time and disability programs.

ABSENCE PERIOD	PROGRAM	PROGRAM ADMINISTRATOR	PROGRAM BENEFIT*
First five business days (Week 1)	Sick time (see page 46)	BMC Payroll	100% of base salary
Weeks 2 and 3	Short-term disability	Liberty Mutual	100% of base salary
Weeks 4 through 6	Short-term disability	Liberty Mutual	75% of base salary
Weeks 7 through 26	Short-term disability	Liberty Mutual	66 2/3% of base salary
Week 26 and onward	Long-term disability	Liberty Mutual	60% of total cash compensation (base salary, bonus and commission**)

\* Benefits are offset by any amounts received under workers' compensation and/or a state disability plan. If you live in California, New York, New Jersey or Hawaii, you may be eligible for state disability benefits. This schedule of benefits also applies to the eight-week Maternity Disability Leave Period.

\*\* Updated annually

You must apply and be approved for Short-Term Disability (STD) benefits before or immediately after you are absent for illness. You can even start your claim in advance of your estimated leave date if you are scheduled for surgery or childbirth.

Your STD benefits will be paid to you directly from Liberty Mutual, BMC's administrator and payment agent for STD. All statutory withholdings will be deducted, and benefits may be offset by any statutory sickness or disability benefits payable to you. During your illness absence, you will be billed directly for your portion of benefits contributions by BMC's benefits administrator, Aon Hewitt.

You can apply for STD benefits online at [www.mylibertyclaim.com](http://www.mylibertyclaim.com) (Claimant ID # BMC2008) or by calling 1-888-408-7300. Liberty Mutual is also our FMLA administrator, so you can also file your FMLA claim (if you are eligible) at the same time you apply for your disability benefits. For more information, see the [How to Request STD or FMLA Leave](#) guide.

In order to be approved for Long-Term Disability (LTD) benefits, you must be permanently and totally disabled and unable to perform your own occupation for the first two years of disability. After two years, the definition of disability changes and you must be unable to hold any job that is reasonably appropriate given your education level, training, or experience. LTD benefits continue until you are no longer disabled, the date you turn 65, or until your death. If you are approved for LTD benefits, you will no longer be covered under the BMC benefit plans; however you will be eligible for COBRA continuation benefits for medical, dental, vision and health care FSA coverage.

(Disability Benefits continues on page 48)



## Supplemental Long-Term Disability (LTD)

You can purchase supplemental coverage of an additional 15% of total pay (base salary, bonus and commission), resulting in a combined benefit of 75% of total pay (base salary, bonus and commission). You pay the cost of supplemental LTD through after-tax payroll deductions. Evidence of Insurability is not required to purchase this coverage. Due to the monthly benefit maximum of \$15,000 for both basic and supplemental LTD, there may be no change in your gross LTD coverage amount if you select the supplemental option. However, your net monthly benefit may be greater with the supplemental LTD option because you will be paying for a portion of the total benefit with after-tax dollars. For more information about how tax rules apply to supplemental disability coverage, see the Group Disability Income Policy on the [My BMC Compensation & Benefits](#) website. Select **Your Benefits Resources**, then **Plan Information**.

*Please Note: LTD benefits will be offset by Social Security, Workers' Compensation and any other statutory benefits available to you. The overall maximum benefit—a basic and supplemental insurance combined maximum—payable under this plan is \$15,000 per month. If you live in California, New York, New Jersey or Hawaii, you may be eligible for state disability benefits.*

## Workers' Compensation

BMC provides all active U.S. employees with workers' compensation insurance coverage according to the state laws that apply. These laws generally provide employees who are injured on the job with compensation for medical expenses and for lost wages due to the injury. Any injury that occurs on BMC property or while on company business should immediately be reported to your manager and your local Human Resources representative. Medical expenses resulting from work-related injuries are not covered through the group health plan, but instead through the workers' compensation insurance carrier.

## Family Medical Leave Act (FMLA)

The Family Medical Leave Act (FMLA) is a federal law that allows individuals up to 12 weeks leave during a 12-month period based on specified family and medical reasons for self, child, spouse or parents or to care for a newborn or newly adopted child. Additional FMLA leave benefits may be available for you if you have a family member who has been called to active military duty or who has been injured as a result of active military duty. You are eligible for FMLA if you have worked at BMC for at least 12 consecutive months and at least 1,250 hours.

FMLA runs concurrently with our sick time and disability programs, if you are eligible. All accrued PTO/Vacation time must be used during your FMLA leave if you are not receiving sick time or disability benefits. Upon expiration of your FMLA leave, reasonable efforts will be undertaken by the company to return you to the same position, or an equivalent position, held by you prior to departure, subject to the company's policy of at-will employment. To apply for FMLA, please call Liberty Mutual at 1-888-408-7300.

# Work/Life Solutions

In addition to health care, income protection and saving benefits, BMC Software offers the following programs to enable you to build a customized benefits program that meets your lifestyle needs.

## Group Prepaid Legal

The BMC Legal Services Plan, underwritten by Hyatt Legal Services (MetLife), offers easy access to experts regarding your legal needs. For enrolled plan members, most services are provided at no cost, while others are provided at a significantly reduced rate. Services are available online, by phone or by in person consultation. The plan can provide assistance regarding:

- Identity theft
- Family issues
- Personal property
- Estate planning
- Real estate ownership or rental

For additional information, go to Hyatt Legal Plans ([www.legalplans.com](http://www.legalplans.com)) or call 1-800-821-6400.

## Group Auto/Homeowner's/Property Insurance

MetLife Auto & Home® provides you with access to insurance coverage for your personal insurance needs. The program gives you access to special group rates and policy discounts. With a MetLife® home policy, you're eligible for full replacement cost coverage. It is what most people think they have, but when their home suffers losses, they find out their insurance won't really put things back the way they were. It's different with MetLife Auto & Home—you get full replacement cost, whatever the cost.

Call 1-800-GET-MET-8 (1-800-438-6388) for a free quote. BMC employees can choose from several convenient payment options, including payroll or checking account deductions. You may even receive a policy discount for selecting this type of payment method.



## Pet Insurance

Nationwide® Pet Insurance (formerly VPI) covers a range of pet care services from wellness care to treatment of significant medical problems. Nationwide is the smart way to protect your pet’s health and your wallet.

Pet insurance provides benefits for veterinary treatments related to accidents and illnesses, including cancer. Medical policies cover diagnostic tests, X-rays, prescriptions, surgeries, hospitalization and more. Competitively-priced wellness coverage can be added to any plan.

Get the health care protection that’s right for your pet by selecting the plan that fits your needs and your budget.



## Plan Options

Major Medical	Pet Wellness	Whole Pet with Wellness
<ul style="list-style-type: none"> <li>• Typical cost starts at \$29/month<sup>1</sup></li> <li>• Highest reimbursement for accidents &amp; illnesses, including cancer</li> <li>• \$250 annual deductible</li> <li>• Coverage for specified hereditary conditions</li> </ul>	<ul style="list-style-type: none"> <li>• Typical cost starts at \$21/month<sup>1</sup></li> <li>• Covers wellness exams including vaccines, flea treatment and nail and trims</li> <li>• No deductible</li> </ul>	<ul style="list-style-type: none"> <li>• Typical cost starts at \$47/month<sup>1</sup></li> <li>• Examples of Covered Conditions:                             <ul style="list-style-type: none"> <li>- Ear infections</li> <li>- Skin rashes</li> <li>- Abscesses</li> <li>- Cancer</li> <li>- Respiratory problems</li> <li>- Kidney &amp; bladder infections</li> <li>- Leukemia</li> <li>- Diabetes</li> <li>- Accidents</li> <li>- And more</li> </ul> </li> </ul>
<p><sup>1</sup>Medical premiums vary based on the age of the pet, species, size (as an adult), and state of residence. Wellness premiums vary based on species of pet and state of insurance. Wellness plans are not available in all states.</p>		

Additional information is available through MetLife at 1-800-GET-MET-8 (1-800-438-6388) or at [www.metlife.com/mybenefits](http://www.metlife.com/mybenefits).

## Tuition Reimbursement Program

The BMC Tuition Reimbursement Program offers up to \$5,500 per calendar year for college-level studies (undergraduate and graduate) to active, full-time employees. The first \$5,250 in expenses is reimbursed tax-free; the remaining \$250 in expenses is taxable income. Eligible expenses include tuition, textbooks and all laboratory and computer fees.

### How the Program Works

1. Before you register for courses, discuss the relevance of the course with your manager and complete the pre-approval process on the Your Spending Account (YSA) website. **YSA will generate a pre-approval form that your manager and director must sign and you must submit before you start your course(s).** Your manager and director will consider courses for reimbursement if the course:
  - Relates to your present job;
  - Prepares you for additional responsibility, or
  - Relates to a potential future assignment within BMC.
2. To receive 100% reimbursement, you must successfully complete the course with a passing grade of “C” or above (“B” in the case of some graduate schools).
3. Once you complete the course, visit YSA and submit a tuition reimbursement request. Attach a copy of your grade report for the course and receipt of payment to your form. You have **90 days** after completing your course to submit your documentation to YSA.

The Tuition Reimbursement Program doesn't cover expenses for professional development, certificate courses or seminars. Submit an expense report to receive reimbursement for non-college course fees.

To complete the pre-approval process, go to the [My BMC Compensation & Benefits](#) website (select **Your Spending Account**). For more information, see the [step-by-step guide](#) to requesting tuition reimbursement.

## Adoption Assistance

The company will provide financial assistance of \$5,000 when you adopt a child. This assistance is intended to help you offset legal and other adoption-related expenses, such as agency fees and court costs. Reimbursement is made to active employees once the adoption is final. The request must be submitted within 30 days from the final adoption date.

For more information and to submit your claim, go to the [My BMC Compensation & Benefits](#) website (select **Your Spending Account**).

## Fitness Reimbursement Program

The BMC Fitness Reimbursement Program helps you improve your health or keep in shape by providing up to \$225 each year to help pay for fitness activities outside your home. **The program accepts only one claim per employee each year.** You have until March 31 to submit your claim to the program administrator for expenses incurred in the previous calendar year. You must be an active employee during the period you incurred expenses and on the date you submit a reimbursement request. To complete the reimbursement form, go to the [My BMC Compensation & Benefits](#) website (select **Your Spending Account**). For more information, see the [step-by-step guide](#) to requesting fitness reimbursement.

## Commuter Account

The Commuter Account, administered by Your Spending Account™ (YSA), offers you both tax-savings and convenience. This benefit lets you pay for eligible transit and vanpool expenses from your paycheck on a before-tax basis.

To participate, you create an account on the YSA website and elect an amount up to \$130 per month before-tax. You can also elect after-tax contributions, and pay for contributions with a credit card. YSA will send you a reloadable Commuter Account card when you place your order. You decide how much to load on the card each month, or you can set up a recurring amount to have it done automatically. You can use the card where you pay for transit expenses.

You can enroll or change your Commuter Account elections on the YSA website as often as once a month throughout the year. Commuter Account orders must be placed by the 10th of the month to be effective for the following month. For example, if you want to use the plan in the month of January, you must make your elections by December 10.

## Plan Contact Information

PLAN	CONTACT	PHONE NUMBER	WEBSITE
All Plans	Your Benefits Resources	1-877-BMC-4849	<a href="http://www.mybmcrewards.com">www.mybmcrewards.com</a> (select Your Benefits Resources)
Medical Insurance — BCBSTX Plans	Blue Cross Blue Shield of Texas (BCBSTX)	1-800-521-2227	<a href="http://www.bcbstx.com">www.bcbstx.com</a>
Prescription Drug Coverage for BCBSTX Medical Plans	Express Scripts	1-866-577-2523	<a href="http://www.express-scripts.com">www.express-scripts.com</a> Prescription Drug Cost-Estimator Tool: <a href="http://www.express-scripts.com/bmcsoftware">www.express-scripts.com/bmcsoftware</a>
Health Decision Support	Best Doctors®	866-904-0910	<a href="http://members.bestdoctors.com">members.bestdoctors.com</a>
Medical Costs & Quality Research	Healthcare Bluebook	800-341-0504	<a href="http://healthcarebluebook.com/cc/bmc">healthcarebluebook.com/cc/bmc</a>
Telehealth	MDLIVE®	1-800-400-MDLIVE (1-800-400-6354)	<a href="http://www.mdlive.com/bcbstx">www.mdlive.com/bcbstx</a>
Blue Cross Blue Shield Global Core	BCBSTX	1-800-810-2583 (toll free) 1-804-673-1177 (collect)	<a href="http://www.bcbglobalcore.com">www.bcbglobalcore.com</a>
Medical Insurance & Prescription Drug Coverage – Kaiser Plan	Kaiser Permanente	1-800-464-4000	<a href="http://www.kp.org">www.kp.org</a>
Dental	MetLife	1-800-942-0854	<a href="http://www.metlife.com/mybenefits">www.metlife.com/mybenefits</a>
Vision	VSP	1-800-877-7195	<a href="http://www.vsp.com">www.vsp.com</a>
Flexible Spending Accounts, Health Savings Account, and Commuter Account	Your Spending Account	1-877-BMC-4849	<a href="http://www.mybmcrewards.com">www.mybmcrewards.com</a> (select Your Spending Account)
Employee Assistance Program	Magellan Health Services	1-800-327-1393	<a href="http://www.magellanassist.com">www.magellanassist.com</a> (When prompted, type in BMC's toll-free EAP number, 1-800-327-1393)
Global Emergency Travel Services	Assist America	1-800-872-1414 (within USA) 1-609-986-1234 (outside USA) Email at: <a href="mailto:medservices@assistamerica.com">medservices@assistamerica.com</a>	<a href="http://www.assistamerica.com">www.assistamerica.com</a> Reference Number: 01-AA-ACN-06048
401(k) Plan	Fidelity	1-866-546-4424	<a href="http://www.netbenefits.com">www.netbenefits.com</a>
Short-term & Long-term Disability & FMLA reporting	Liberty Mutual	1-888-408-7300	<a href="http://www.mylibertyconnection.com">www.mylibertyconnection.com</a> Claimant ID: BMC2008
Group Prepaid Legal Assistance	Hyatt Legal Plans	1-800-821-6400	<a href="http://www.legalplans.com">www.legalplans.com</a>
Group Auto/Homeowner's/Property Insurance	MetLife	1-800-GET-MET-8 (1-800-438-6388)	<a href="http://www.metlife.com/mybenefits">www.metlife.com/mybenefits</a>
Pet Insurance	MetLife	1-800-GET-MET-8 (1-800-438-6388)	<a href="http://www.metlife.com/mybenefits">www.metlife.com/mybenefits</a> (follow the pet insurance link)
Tuition & Fitness Reimbursement & Adoption Assistance	Your Spending Account	1-877-BMC-4849	<a href="http://www.mybmcrewards.com">www.mybmcrewards.com</a> (select Your Spending Account)
Participant Advocacy — (Help with medical, dental, vision or FSA claims)	Your Benefits Resources	1-888-886-8734	<a href="http://www.mybmcrewards.com">www.mybmcrewards.com</a> (select Your Benefits Resources)
Wellness Program	ADURO	1-855-864-0721	<a href="http://www.mybmcwellness.com">www.mybmcwellness.com</a>



# Appendices

## Getting Help With Eligibility & Claims

The plans have a review process that is followed whenever you submit a benefit claim or an eligibility claim. There are dedicated teams to assist you with both benefit and eligibility issues.

When you file a claim, the claims administrator reviews the claim and, in accordance with plan provisions, either approves or denies the claim (in whole or in part). The claims administrator will notify you of this action. In some situations, the plan may need an extension of time to process the claim (for example, if the plan needs additional information). In these cases, you'll be notified of the extension and the additional information needed.

## Getting Eligibility Help—Claims and Appeals

If you have an issue with your claim dealing with eligibility for you or a covered dependent, Claims and Appeals can help. Claims and Appeals is a special group of Your Benefits Resources representatives dedicated to assisting you with your eligibility claims issues. Call Your Benefits Resources at 1-877-BMC-4849 for assistance. Claims and Appeals will conduct an initial review and determination.

## Getting Claims Help—Participant Advocacy Team

BMC Software wants you to get the most out of your health care benefits. The Participant Advocacy service is available to help you resolve any conflicts you may have with your medical, dental or health care/dependent care FSA claims and carriers.

### Definition of “Benefit Claim” & “Eligibility Claim”

A **BENEFIT CLAIM** is a request for a particular benefit under an option (for example, a claim for a certain type of surgery under the medical plans). A benefit claim typically includes your initial request for benefits.

An **ELIGIBILITY CLAIM** is a request to enroll, disenroll or change your participation in a specific option or coverage category outside of the enrollment guidelines stated in this guide. Eligibility claims are filed by calling Your Benefits Resources at **1-877-BMC-4849** between 7 a.m. and 6 p.m. weekdays.

### What Is Participant Advocacy?

Participant Advocacy will help you with unresolved health plan access or claims issues. The Advocate Team will research your issue and work with your health plan to resolve it on your behalf.

The Advocate Team helps ensure that your issue is given the attention it deserves and is considered fairly. However, contacting the Advocate Team does not guarantee the resolution you want—the terms of the plan still apply.

The service is available to employees enrolled in medical, vision, prescription drug, mental health care, dental and the health care/dependent care FSA plans.

### How Can I Reach the Advocacy Team?

Call the Participant Advocacy Team at 1-888-886-8734 between 7 a.m. and 6 p.m. weekdays. All calls are confidential.

#### Have the Following Information Ready When You Call the Benefits Center

- Issue description
- Health care provider
- Date(s) of service
- Claim amount
- Health plan's response

## COBRA: If You and Your Dependents Lose Health Care Coverage

If you lose your BMC medical, dental and vision coverage, in certain situations you may be able to continue coverage on an after-tax basis. This opportunity to continue coverage is provided by the Consolidated Omnibus Budget Reconciliation Act (COBRA), a federal law.

COBRA coverage is a temporary continuation of health care coverage when it otherwise would end because of a life event, known as a “qualifying event.” After a qualifying event, COBRA continuation coverage is offered to each “qualified beneficiary.” You, your spouse/domestic partner and your dependent children could become qualified beneficiaries if coverage under the health care plans is lost because of the qualifying event. You pay a monthly premium for continuation of coverage. BMC does not pay for or contribute toward the premium, so coverage is more expensive than health coverage for active employees.

COBRA applies to these plans:

- Medical insurance
- Dental insurance
- Vision insurance
- Health Care Flexible Spending Account
- Employee Assistance Program

For additional information about your rights and obligations under federal law and under BMC’s group health care plans—medical (including prescription drugs), dental and vision coverage and the Health Care FSA—contact Your Benefits Resources (YBR) Benefits Center at **1-877-BMC-4849**.

## Coverage Options

When you or a qualified beneficiary chooses to continue coverage, coverage options include:

- Keep the same level of coverage you had as an active employee or choose a lower level of coverage
- Change coverage (if enrolled within the initial 60-day enrollment window) in either of the following circumstances:
  - During the annual enrollment period
  - If you or your dependent has a qualified status change (life event) or another change in circumstances recognized by the Internal Revenue Service (IRS) and BMC
- Enroll any newly eligible spouse or dependent child under the health care plan’s rules

## When Your Age 26 Dependent Loses Health Care Coverage

Health care coverage for your dependent child will end on the last day of the month in which he or she turns age 26. Your child can remain covered under the BMC group health care plans for up to 36 months through COBRA by enrolling in single coverage and paying the full premium. You will receive COBRA information in the mail automatically when your dependent turns age 26.

## When You Can Elect COBRA Coverage

The following charts show how long you and your eligible dependents (qualified beneficiaries) can continue COBRA coverage.

IF YOU LOSE COVERAGE BECAUSE...	YOU CAN CONTINUE COVERAGE FOR...
You are no longer eligible due to termination of your employment or your work hours are reduced below 30 regularly scheduled hours per week	18 months
You are no longer eligible due to termination of your employment and either you or a dependent is disabled (according to the Social Security definition) at any time during the first 60 days of COBRA coverage	29 months

## Ending Coverage

COBRA coverage under a group health care plan ends before the maximum continuation period if:

- You or your covered dependent fails to make timely premium payments or contributions
- You or your covered dependent become entitled to Medicare
- You or any of your covered dependents become covered under another health care plan not offered by the company
- During an extended period of COBRA coverage due to a disability (and assuming there has not been a second qualifying event), a final determination is made by the Social Security Administration that the qualified beneficiary is no longer disabled

For more information about your rights under the Employee Retirement Income Security Act of 1974 (ERISA), including COBRA, the Health Insurance Portability and Accountability Act of 1996 (HIPAA) and other laws affecting group health care plans, contact the nearest regional or district office of the U.S. Department of Labor's Employee Benefits Security Administration (EBSA) in your area, or visit the EBSA website ([www.dol.gov/ebsa](http://www.dol.gov/ebsa)). (Addresses and phone numbers of regional and district EBSA offices are available through EBSA's website).

## Terms to Know

An understanding of these terms will help you gain a greater understanding of your benefits.

**Allowable amount.** The amount allowed by the plan for a given service, supply or procedure.

**Annual dollar maximum.** Each person can receive plan reimbursements up to a calendar-year limit. Annual dollar maximums apply as a single amount to in-network and out-of-network services combined.

**Balance billing.** When the allowable amount is less than a health care provider usually charges, a provider can bill the patient for the amount not paid by the plan. If this occurs with a network provider, you are not responsible for the additional amount. With a non-network provider, you are responsible for payment, and the amount of the balance bill does not apply to your out-of-pocket maximum.

**Coinsurance.** The portion of covered expenses the plan pays after the deductible is met. Coinsurance is expressed as a percentage.

**Copayment (copay).** The dollar amount you must pay for specific supplies or services.

**Deductible.** The portion of covered expenses you pay each calendar year before the plan begins to reimburse you for all eligible expenses.

**Drug Preferred.** A list of prescription drugs, both generic and brand name, that are approved by the health plan.

**Generic drug.** A chemical copy of a brand-name drug.

**Health Savings Account (HSA).** A before-tax account feature of a high-deductible medical plan (BCBSTX HSA Plan) that you use to pay your health-related expenses each year. BMC contributes to the account, and you may also make voluntary before-tax contributions each year.

**High-Deductible Health Plan (HDHP).** An option that provides comprehensive health care coverage for you and your family along with a tax-advantaged Health Savings Account that lets you save to pay for your current and future out-of-pocket health care expenses. The HDHP/HSA gives you greater flexibility and discretion over how you use your health care benefits.

**Network provider.** A doctor, hospital or other health care provider who is an active member of a particular plan's provider network.

**Non-network provider.** A doctor, hospital or other health care provider who is not an active member of a particular plan's provider network.

**Out-of-pocket maximum.** When the amount of coinsurance you pay for expenses has reached a stated annual maximum, the plan will reimburse 100% of covered expenses for the rest of the calendar year. You must still pay all required copayments (if any).

**Preferred Provider Organization (PPO).** A PPO is a managed care organization of medical doctors, hospitals and other health care providers who have contracted with an insurer or a third-party administrator to provide health care at reduced rates to the insurer's or administrator's clients.

**Preventive Prescription Drug.** Medications prescribed for disease prevention. To view medications that are considered preventive under the BCBSTX HSA Plan, please see the list on [My BMC Compensation & Benefits](#) website. Select **Your Benefits Resources**, then **Plan Information**.

**Specialty pharmacy.** A specialty pharmacy is a pharmacy that provides specialty medications. Specialty medications often require special storage and handling that most retail pharmacies cannot manage. These medications include injectable, infused and selected oral therapies. A specialty pharmacy offers these medications, and an in-house compounding pharmacy lets pharmacists create forms of medication that are not available in stores. Patients may have trouble sticking to their therapy schedule and often have side effects from their medications. This is why specialty medications require a pharmacist or registered nurse to monitor the treatment. BMC strongly recommends that all specialty medications be obtained through either the Express Scripts or Kaiser Specialty Pharmacy services.

**Step Therapy.** A process where Express Scripts works with you and your doctor to see if you should first take a less expensive generic or brand drug before trying a non-preferred higher cost medication.

**Usual and customary (U&C) (allowable charges).** Charges that fall within an acceptable range based on the most common fees for similar services in a given local area, as determined by BCBSTX using Health Insurance Association of America (HIAA) rates. Additional factors such as the complexity and complications of a procedure may also be considered. If your expenses exceed the U&C charge, you will pay the excess amount. Usual and customary charges for services within the PPO network are predetermined—you should not be billed for the excess amount.



## About This Guide

This information is only a summary. The provisions of the benefit plan documents, the current BMC Software, Inc. (the Company) policies, and the insurance policies as applicable will determine your actual benefits. If there is a conflict between this guide and the plan/company policies or documents, the plan/Company policies or documents will govern. The Plan Administrator has the final discretionary authority to determine all issues arising under the benefit plans it administers, including issues of interpretation, eligibility, benefits and factual determination. If there is a conflict between this guide and a determination or interpretation made by the Plan Administrator, the interpretation adopted by the Plan Administrator will govern.

The discussion in this summary constitutes a projection of future benefit outcomes that may be available under the applicable benefit plans. The discussion is not a guarantee or warranty that such outcomes will in fact occur. The Company reserves the right to amend, modify or terminate its health and retirement plans at any time. Such changes may include reduction or elimination of benefits. However, no change will result in the elimination or reduction of legally vested benefits in a retirement plan. The Company's sponsorship of active health and welfare plans and retirement plans shall not in any way constitute or be construed as a guarantee or promise of continued employment.

Your receipt of compensation and certain benefits from the Company may be subject to income taxes by the federal government and certain states and/or municipalities that have an income tax. From time to time, the Company may provide you with tax-related information pertaining to its compensation and benefits programs. Taxation of income is complex and is subject to many different variables and individual circumstances. As a result, the Company cannot and does not provide any tax advice to its current or former employees. Any tax-related information that might be provided to you is solely for informational purposes. You should not rely upon any such communications in tax planning or in making any tax-related decisions. You are solely responsible for complying with your federal income tax obligations (and state and/or local income tax obligations if applicable). If you have any tax questions or concerns, you should retain a competent and qualified tax advisor to advise and assist you in complying with your tax obligations.